

drobo

Drobo 5N Getting Started Guide



Table of Contents

Before You Begin.....	3
Product Features at a Glance.....	3
Checking Box Contents	4
Checking System Requirements	4
Operating Systems Supported	5
Connectivity Interfaces Supported for the Drobo 5N.....	5
Checking the Hardware You Need	5
Selecting Drives.....	5
Determining Drive Space Requirements	7
Using a Router or Switch with the Drobo 5N.....	7
Using Power Protection	8
Setting Up Your Drobo 5N	9
Installing Drobo Dashboard	9
Installing an mSATA SSD.....	14
Inserting the Drives.....	15
Connecting the Cables and Turning on Your Drobo 5N.....	16
Setting the Administrator Username and Password.....	17
Where to Go Next	19
Using Best Practices.....	19
Keeping Your Software Up to Date	19
Checking for Software Updates Automatically	20
Checking for Software Updates Now	21
Manually Updating Firmware from the Website	21
Safely Shutting Down Your Drobo 5N	22
Safely Shutting Down Your Drobo 5N Using Drobo Dashboard	23
Safely Shutting Down Your Drobo 5N Manually.....	25
Using the Online User Guide.....	25
Using Context-Sensitive Help.....	25
Using the Knowledge Base	26
Registering Your Drobo 5N	26
Getting Support.....	29
Copyright, Safety and Limited Warranty Information	30

Before You Begin

Before you begin setting up your Drobo 5N, it's a good idea to check system and hardware requirements.

This section covers the following topics:

- ▶ Product Features at a Glance
- ▶ Checking Box Contents
- ▶ Checking System Requirements
- ▶ Checking the Hardware You Need
- ▶ Copyright, Safety and Limited Warranty Information
- ▶ Printing the Getting Started Guide (pdf)

Product Features at a Glance

For a quick overview of features of the Drobo 5N, refer to the following images.

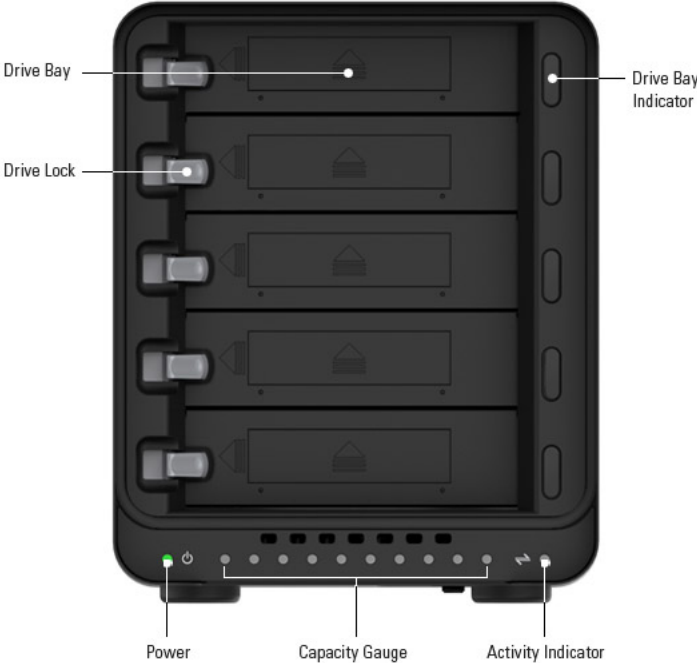


Figure 1: Front of the Drobo 5N with the bezel (faceplate) removed.

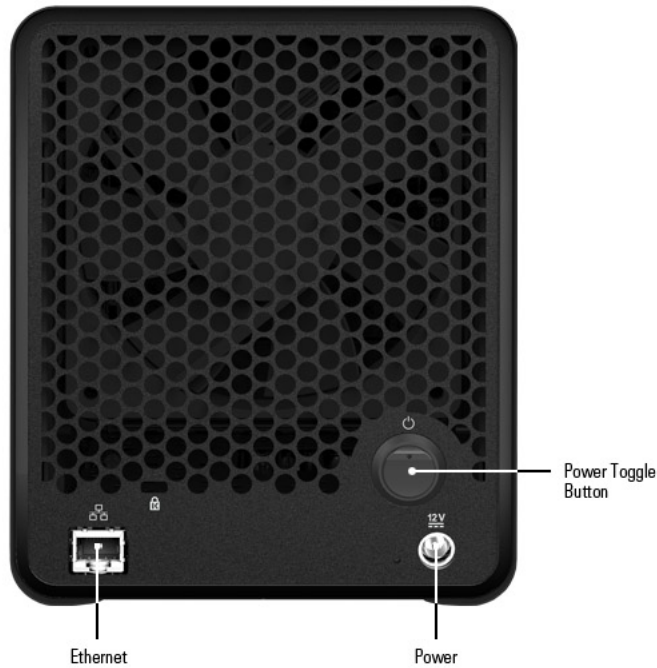


Figure 2: Back of the Drobo 5N.

Checking Box Contents

Check your product's box to ensure it contains all the components listed below.

- Drobo 5N
- 6' Ethernet cable
- 6' power cord with power supply
- Quick Start Guide (printed)
- Safety and Warranty Guide

Checking System Requirements

Check to ensure your operating system and cable interface are supported with the Drobo 5N.

This section covers the following topics:

- ▶ Operating Systems Supported
- ▶ Connectivity Interfaces Supported for the Drobo 5N

Operating Systems Supported

Operating Systems supported for the Drobo 5N include:

- OS X 10.7.x Lion
- OS X 10.8.x Mountain Lion
- Windows 7 (Service Pack 1 or later, 32-bit and 64-bit)
- Windows 8 (32-bit and 64-bit)

Notes:

- *For best performance and interoperability, ensure you are running the latest service packs for the appropriate Windows operating systems.*
- *For the most current list of supported operating systems, check the specifications for your products online at www.drobo.com/products/index.php.*

Connectivity Interfaces Supported for the Drobo 5N

Your Drobo 5N connects to a network via a router or switch using an Ethernet port. Ethernet is the standard local area network (LAN) access method.



Gigabit Ethernet Port

Drobo 5N supports gigabit Ethernet connections (1000 Mbit/s) for optimal performance. It will, however, auto-negotiate the highest connection speed available to your router or switch.

Checking the Hardware You Need

To use your Drobo 5N, you will need at least two hard drives. If you plan to use [Dual Disk Redundancy](#), which protects your data against *two* hard drive failures, you will need at least *three* hard drives.

This section covers the following topics:

- ▶ Selecting Drives
- ▶ Determining Drive Space Requirements
- ▶ Using a Router or Switch with the Drobo 5N
- ▶ Using Power Protection

Selecting Drives

The Drobo 5N supports both standard 3.5" SATA hard disk drives (HDDs) as well as SATA solid state drives (SSDs) for added performance. For HDDs, these drives can be from any manufacturer and with any capacity. For SSDs, please visit our web page for [compatible drive options](#).

In addition, the Drobo 5N has a Drobo Accelerator Bay, which accepts an industry-standard [mSATA SSD \(Solid State Drive\)](#). When the mSATA SSD is installed, Drobo's [Data-Aware Tiering](#) feature is enabled, accelerating performance when reading data from your Drobo device. Having

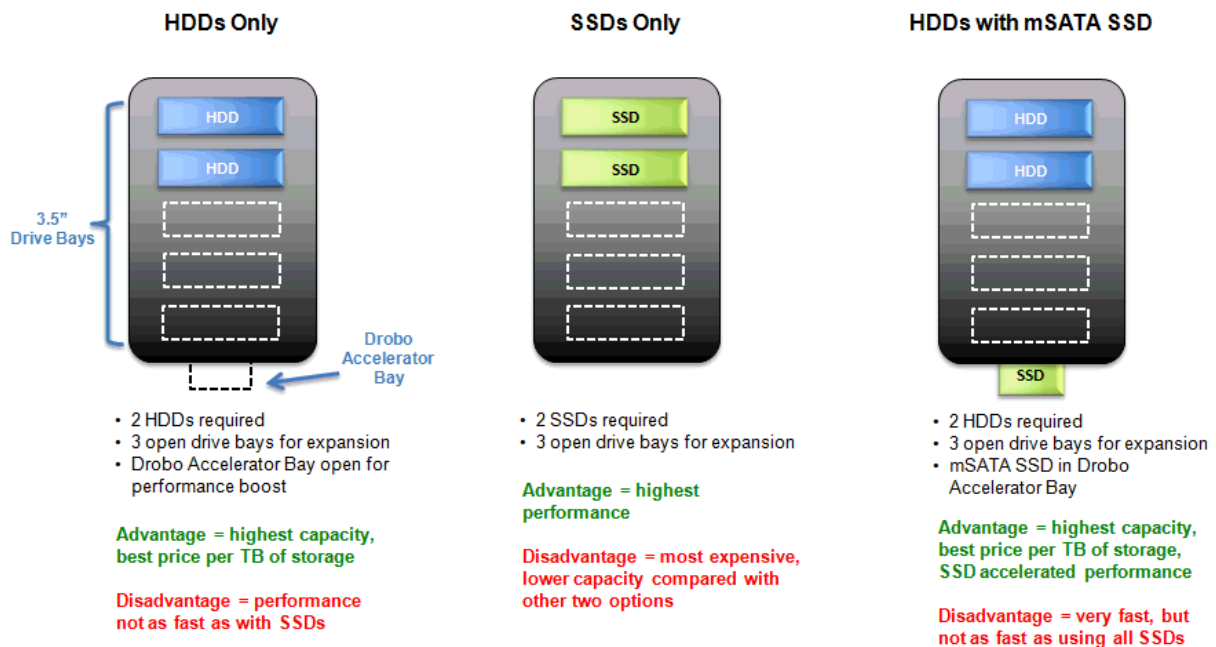
an mSATA SSD installed leaves all drive bays available for high-capacity hard disk drives (HDDs) so that you can get both high-capacity and accelerated performance out of your Drobo device.

Using only SSDs in the main drive bays of your Drobo 5N provides the fastest performance when reading and writing data to and from your Drobo device.

In summary, here are the recommended number and type of drives you can use with your Drobo 5N. Note that you need at least two drives in the drive bays to ensure your data is protected in the event of drive failure.

- 2 to 5 **HDD**(Hard Disk Drive)s in the main drive bays - enables you to maximize capacity
- 2 to 5 HDDs in the main drive bays plus an mSATA SSD installed - enables you to maximize capacity and accelerate read performance
- 2 to 5 **SSD**(Solid State Drive)s in the main drive bays with no mSATA SSD - enables you to maximize read and write performance

For a performance comparison of these options, see the following illustration.



Important Notes:

- If an incompatible SSD is inserted into the Drobo device, the drive light will blink red, indicating the need to replace that drive. Please refer to our web page on [compatible drive options](#). for more information.
- The mSATA SSD is not part of the disk pack of your Drobo 5N, allowing you to leave it installed even if you transfer drives from the drive bays to another Drobo device, for example.
- When Data-Aware Tiering is enabled, an icon displays in Drobo Dashboard, the software companion to your Drobo device.
- The Drobo 5N is not compatible with **IDE**(Integrated Drive Electronics), **SCSI**(Small Computer System Interface), **PATA**(Parallel Advanced Technology Attachment) or **SAS**(Serial Attached SCSI) drives.

Warning! Any pre-existing data on the drives will be erased when inserted into the Drobo 5N.

Determining Drive Space Requirements

In order to protect your data from hard drive failure, your Drobo 5N requires more space than what you will use for your data, sometimes as much as *double or more* the amount of space.

The best way to determine how much usable, protected storage space you will have available for your data, based on the number and capacity of your drives, is to use our Capacity Calculator at www.drobo.com/calculator.

A shortcut to estimating the **capacity** available for your data is to omit the largest drive and then add the capacity of the remaining drives. If you plan to use Dual Disk Redundancy, omit the largest *two* drives. For example:

Single Disk (Default) Redundancy

# Drives	Drive Capacities	Usable Protected Capacity*
3	3TB + 3TB + 3TB	= 6TB
4	250GB + 250GB + 500GB + 750GB	= 1TB
4	250GB + 500GB + 1TB + 2TB	= 1TB, 750GB

Dual Disk Redundancy

# Drives	Drive Capacities	Usable Protected Capacity*
4	3TB + 3TB + 3TB + 3TB	= 6TB
5	250GB + 250GB + 500GB + 500GB + 750GB	= 1TB
5	250GB + 500GB + 750GB + 1TB + 2TB	= 1.5TB

Notes:

- Actual capacity is often less than what is shown in the examples above due to the different systems used for rating capacity. This has nothing to do with Drobo devices.
- Know that all Drobo devices enable you to easily increase storage capacity at any time by simply inserting additional drives or replacing smaller drives with larger ones.

Using a Router or Switch with the Drobo 5N

You will be plugging your Drobo 5N into a router or switch that must already be configured to work with your network. Your router or switch must have at least one **Ethernet** port open and available.

Your router or switch must also support **DHCP**. If it does not, you will need to directly connect your Drobo 5N to one of your *computer's* Ethernet ports for the initial setup.

Tip: To check for DHCP support, refer to the documentation for your router or switch. You may also choose to proceed with installation and check for DHCP support only if you experience a problem.

For optimal performance, it's best if your router or switch supports gigabit Ethernet connections (1000 Mbit/s). Your Drobo 5N, however, will auto-negotiate the highest connection speed available to your router or switch.

Using Power Protection

We recommend using the following power protection with your Drobo device:

- An uninterruptible power supply (UPS), which protects against sudden losses in power
- A power surge protector to protect against power surges

Setting Up Your Drobo 5N

Once you have unpacked your Drobo 5N from its box and ensured you meet all system and hardware requirements, it is time to set up your Drobo device for use. This can be done in just four easy steps!

1. [Install Drobo Dashboard](#).
2. [Install an mSATA SSD](#) (optional).
2. [Insert the drives](#).
3. [Connect the cables and turn on the power](#).
4. [Set the administrator username and password](#).

Installing Drobo Dashboard

Drobo Dashboard is the software companion to your Drobo 5N, enabling you to easily set up and manage your Drobo device. Immediately following installation, you can choose to set Drobo Dashboard to automatically install version updates, which we highly recommend.

Drobo software and firmware updates can also be installed from www.drobo.com/support/updates.

Note: You need to have administrator rights on the computer on which you install Drobo Dashboard, and also have access to the Internet.

1. Navigate to www.drobo.com/start and click on the latest Drobo Dashboard for your Drobo product to run and install it.

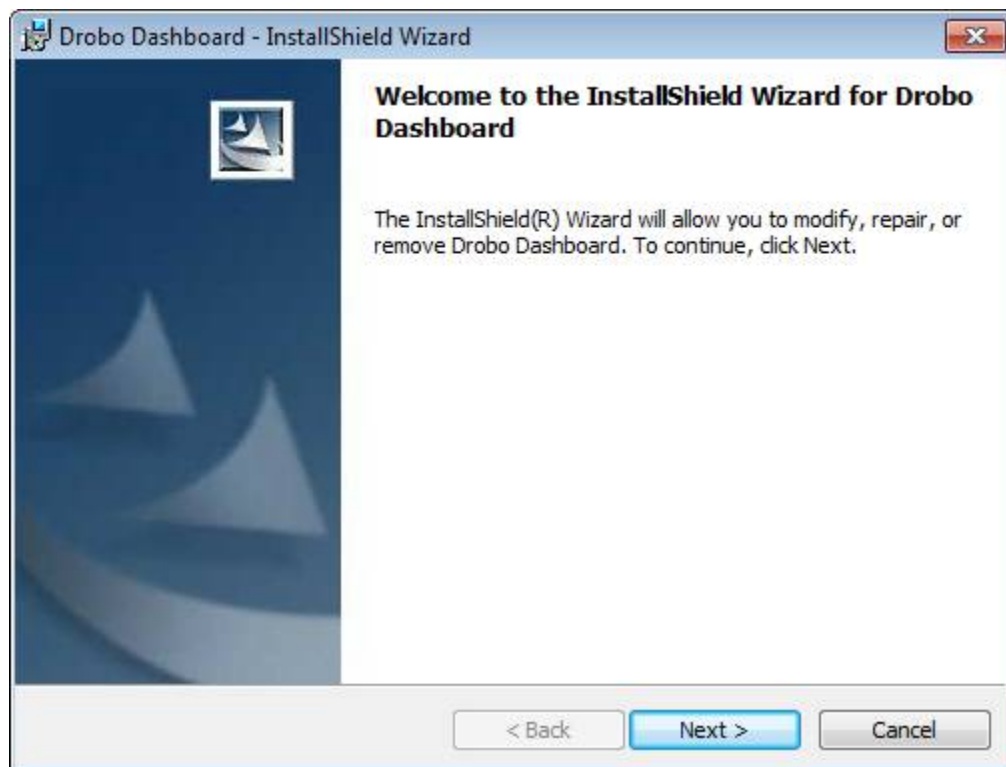
Note: *The first time you install Drobo Dashboard, you will be asked to select a language from the drop-down list. Please do this.*

The Drobo Dashboard Installer (or Installation Wizard) opens, preparing to install.

On a Mac, this screen appears as follows.



In Windows, this screen appears as follows.



2. Click the **Next** (Windows) or **Continue** button (Mac), as appropriate.

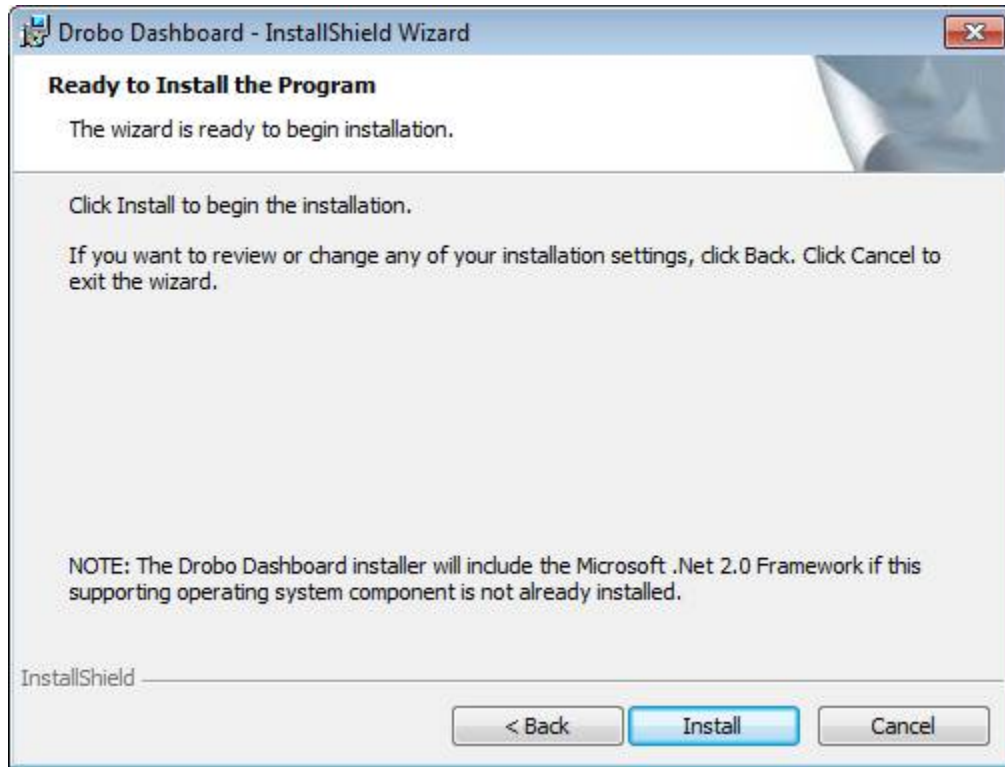
Note: If the Microsoft iSCSI Initiator window appears, click the **Yes** button. Follow the instructions to install the Microsoft iSCSI Initiator, clicking the **Next** button as needed. When finished, you are returned to the InstallShield Wizard to continue installation.

3. Follow the directions of the Installation Wizard, clicking the **Next** or **Continue** button after each page, as appropriate.
4. When you reach the installation page, click the **Install** button.

On a Mac, this screen appears as follows.



In Windows, this screen appears as follows.



Depending on your operating system, one of the following may result:

- In the Mac, you will be prompted for your administrator password. Enter it and click the appropriate button.
- In some Windows operating systems, a **Windows Access Control** dialog box appears, asking if you want to allow changes to your computer. Click the **Allow** or **Yes** button, as appropriate.

Drobo Dashboard installs on your computer.

5. If you are on a Mac, you will be prompted to restart your computer in order to complete installation. Do this.
6. After installation is complete, leave the **Launch Drobo Dashboard** check box selected and click the **Finish** button.

Note: Before Drobo Dashboard launches, you may be asked if Drobo can collect anonymous information on your usage. Click **Yes** or **No**, as desired. You may also be prompted to register your Drobo device now.

The Drobo Dashboard application launches and the **All Drobos** page opens. After a few seconds, Drobo "discovers" all Drobo devices currently connected and displays them on this page.

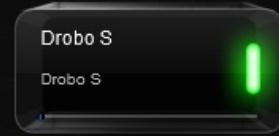
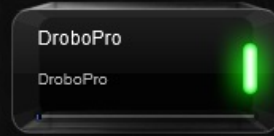
If you have no Drobo devices yet connected or powered on, a "No Drobos Detected" message displays until you do.

All Drobos



Icons | List

Sort By :



[Drobo Discovery Settings](#)



Double-click a device to open its details screen.

Installing an mSATA SSD

You can install an mSATA SSD into your Drobo 5N. Doing so provides accelerated performance when reading data from your Drobo 5N. For more information on drive requirements, see [Selecting Drives](#).

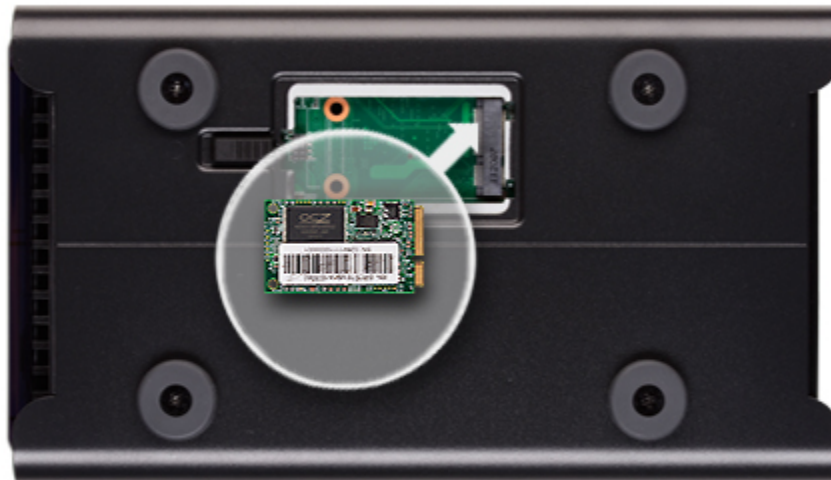
It is best to install the mSATA SSD before inserting drives into the Drobo 5N's drive bays.

Important Notes:

- The mSATA SSD is **not** part of your Drobo device's *disk pack*, so you can add or remove it at any time.
- Your Drobo device must be powered off and unplugged before installation.
- It is important to ground yourself before installing the mSATA SSD in order to discharge static electricity. To do so, touch a grounded metal object just before installation.

Warning! If there is any pre-existing data on the mSATA SSD it will be erased. If you wish to keep the data, copy it to another drive or medium before using with your Drobo device.

1. Gently turn the Drobo 5N on to its side to access the bottom of the Drobo 5N, and open the Drobo Accelerator Bay door.
2. Slide the mSATA SSD into the slot as depicted in the image below.



3. When finished, close the Drobo Accelerator Bay door and return the Drobo 5N to its normal position.

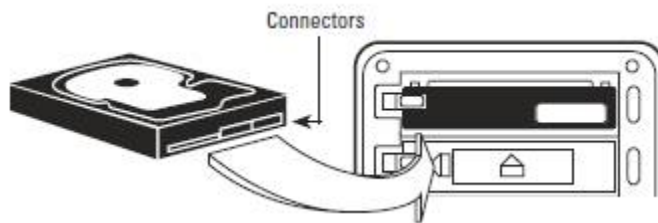
Inserting the Drives

After installing Drobo Dashboard and, if needed, installing an mSATA SSD, you are ready to insert drives into your Drobo 5N. For more information on drive requirements, see [Selecting Drives](#).

Warning! Any pre-existing data on the drives will be erased, as the drives will be formatted. If you wish to keep the data, copy it to another drive or medium before using with your Drobo device.

Note: Once you insert the drives into your Drobo device, they function as a unit or “pack.” To access the data on them, you will need the entire pack.

1. Remove the bezel (faceplate) from the front of your Drobo device by pulling it off.
2. With one hand, hold the drive so that the label on the top of the drive faces up (and its connectors are positioned at the device and toward the left). Refer to the image below.



3. With your other hand, use your thumb to depress and hold open one of the drive locks to a selected data bay. Refer to the image below.



4. Slide the drive into the data bay, release the drive lock and push the drive into place until you feel it connect.

The drive lock snaps behind the drive, securing it into place.

Note: If you are inserting an SSD (Solid State Drive), ensure that it is compatible by visiting our web page on [compatible drive options](#).

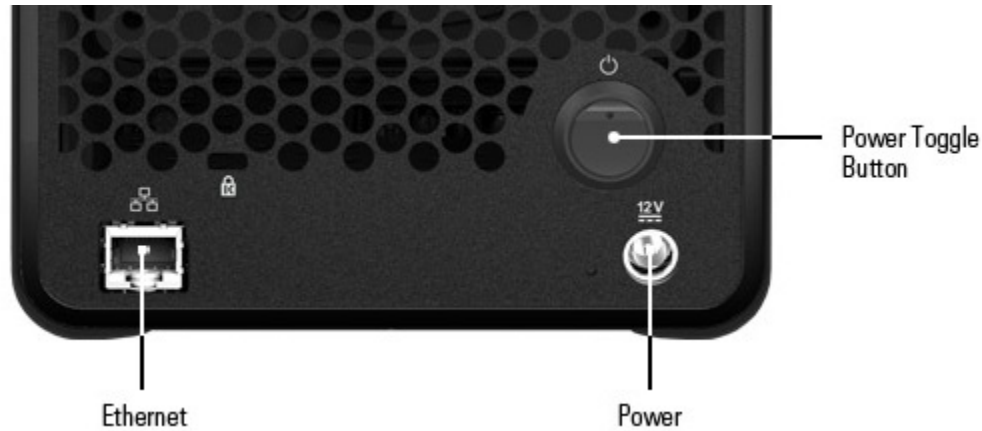
5. Insert additional drives in the same manner, following steps 2 through 4.
6. When finished, replace the bezel right side up, so that when your Drobo device is turned on, you will be able to see the indicator lights.

You are now ready to connect cables and power on your Drobo device.

Connecting the Cables and Turning on Your Drobo 5N

After installing Drobo Dashboard and inserting the hard drives into your Drobo 5N, you are ready to connect the cables and power on your Drobo device.

As you follow the steps, refer to the image below.



Notes:

- Your Drobo 5N is set to automatically obtain an IP address once connected to your network. After initial setup, you can set a static IP address if desired. For more information, see [Configuring Network Settings for Your Drobo 5N in the Online User Guide](#).
- After you connect your Drobo device to your network, Drobo Dashboard will “discover” your Drobo device. If it does not, make sure your network supports [Dynamic Host Configuration Protocol \(DHCP\)](#), which assigns IP addresses to devices on a network. You can refer to the documentation for your router or switch. If it does not, you will have to directly connect your Drobo 5N to one of your computer’s Ethernet ports for the initial setup.

Your Drobo 5N connects to a network using an Ethernet port.

1. Plug one end of the Ethernet cable into the back of your Drobo 5N.
2. Plug the other end into your router or switch.
3. Connect the power supply to the power connection at the back of your Drobo device.
4. Connect the other end of the power supply to a power source.

Note: We recommend plugging into an [uninterruptible power supply \(UPS\)](#) or [surge protector](#). For more information, see [Using Power Protection](#).

5. With Drobo Dashboard running on your host computer, press the power toggle button on the back of your Drobo device once.

The following results:

- Your Drobo device powers on.
- Message boxes may initially appear while Drobo Dashboard automatically discovers your device and formats your drives.

- After setup is complete, your Drobo device displays in Drobo Dashboard on the **All Drobos** page, as follows.



Notes:

- *Drobo Dashboard automatically assigns “Drobo” as the default name for your Drobo device, which you can rename later.*
- *A drive bay indicator light displays green for each hard drive on your Drobo device. For details, see [Understanding the Indicator Lights](#).*

Setting the Administrator Username and Password

For the Drobo 5N, this is the last step in the setup of your Drobo device.

1. In Drobo Dashboard, double-click the appropriate Drobo device from the **All Drobos** page. The **Status** page opens.
2. Click the link that reads: **Click here to password protect this Drobo.** The **Admin Settings** page opens.

Admin Settings drobo

Configure the following settings to password protect the Drobo device against unwanted access.

Admin User

Login Details

Username

Password

Confirm Password

3. In the **Username** text box, enter a username for the administrator. “Admin” is the default.
4. In the **Password** text box, select any default text that appears there, press the Delete key and enter a password for the administrator.
5. In the **Confirm Password** text box, select any default text that appears there, press the Delete key and re-enter the password you just typed.
6. Click the **OK** button.

You are returned to the **Status** page and now logged in to this Drobo device.

Note: If you would like to use Drobo's Dual Disk Redundancy feature, you will need to enable it.

Where to Go Next

After you've set up your Drobo device, you're ready to store and back up data onto it. Next steps include the following. Click on a topic to learn more.

- [Implementing best practices](#) to maximize the safety of your data
- Ensuring optimal performance by [keeping your software \(Drobo Dashboard and your Drobo device's firmware\) up to date](#)
- Knowing how to [safely shut down your Drobo device](#)
- [Using the Online User Guide](#) and [context-sensitive help](#) to learn more about how to manage and use your Drobo device
- [Using our knowledge base](#) to answer almost any additional question
- [Registering your Drobo 5N](#)
- [Getting the support](#) you may need

Using Best Practices

Although your Drobo device provides redundancy and automatically protects your data against a drive failure, it should only be one part of an overall, digital asset management strategy.

To better safeguard your valuable data, we strongly encourage you to review our guide on best practices, which can be found at <http://www.drobo.com/solutions/index.php>.

Our guide offers strategies to protect data beyond drive failures. Following best practices will help maximize the safety of your data.

Keeping Your Software Up to Date

To ensure optimal performance, we highly recommend that you set your Drobo device to automatically check for software updates. (You may have already done this during the initial setup.) This feature keeps both Drobo Dashboard and your product's firmware current.

You can also install updates from www.drobo.com/support/updates. If you would like to install a firmware update from the Drobo website, see [Manually Updating Firmware from the Website](#).

This section covers the following topics:

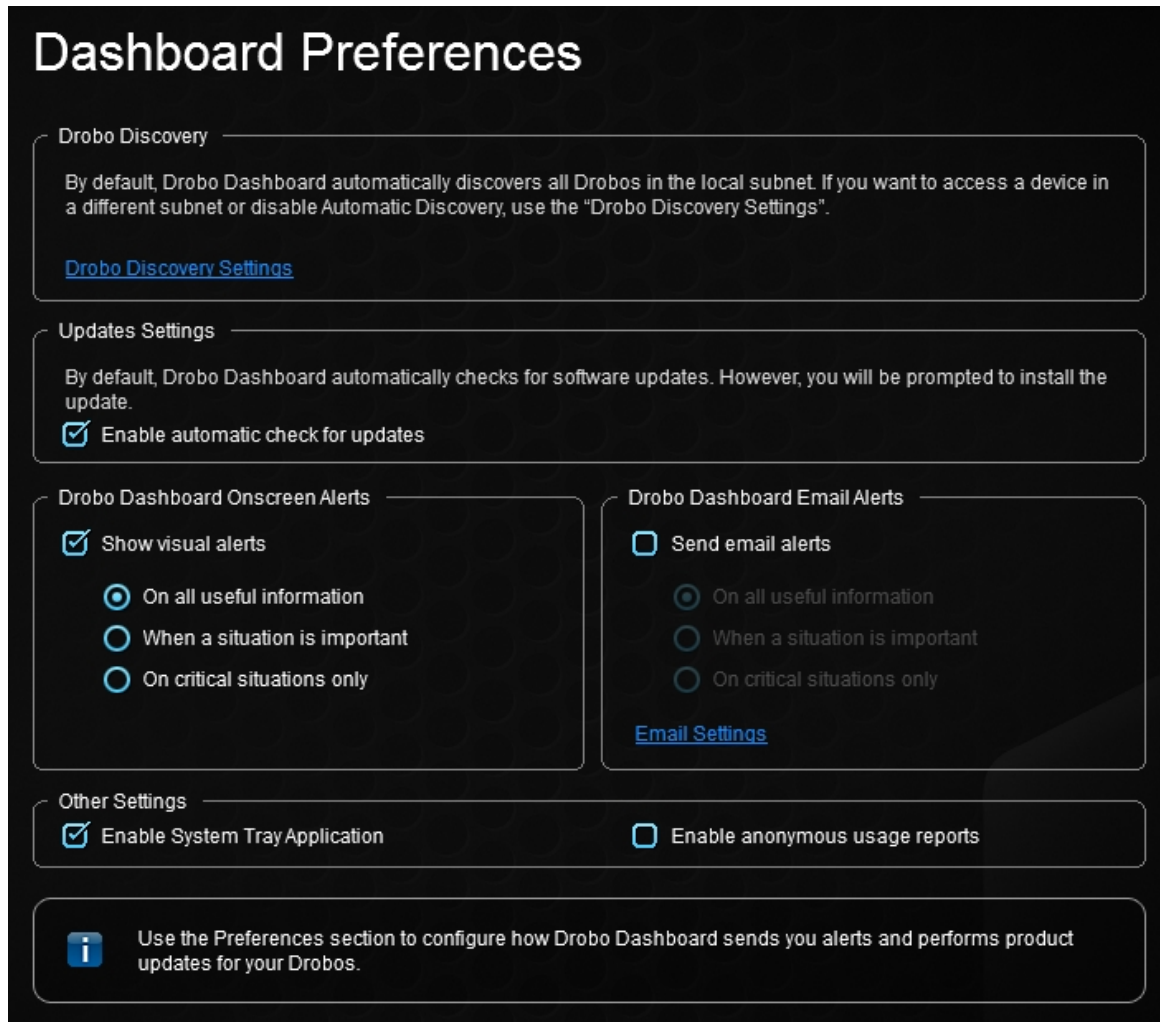
- ▶ Checking for Software Updates Automatically
- ▶ Checking for Software Updates Now
- ▶ Manually Updating Firmware from the Website

Checking for Software Updates Automatically

The following steps keep your Drobo Dashboard and your Drobo device's firmware up to date automatically.

1. If it's not already running, launch Drobo Dashboard from the host computer and select the appropriate Drobo device on the **All Drobos** page.
2. Click **Dashboard Preferences** on the **Navigation** menu.

The Dashboard Preferences page opens.



3. Ensure that the **Enable automatic check for updates** check box is selected, and then click the **OK** button.

You can also deselect the **Enable automatic check for updates** check box, though we recommend that you keep it selected.

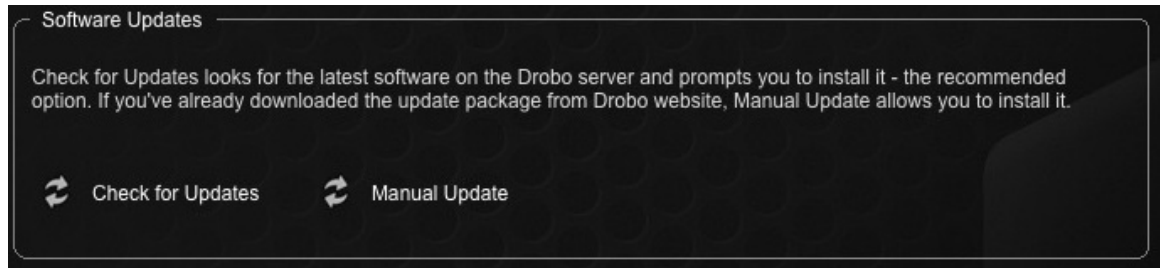
4. When one or more software updates are available, a message opens, asking if you would like to install the update(s). If so, click the **Yes** button and follow the prompts to install them.

Checking for Software Updates Now

The following steps ensure that Drobo Dashboard and your Drobo device's firmware are up to date.

1. In Drobo Dashboard, select the appropriate Drobo device on the **All Drobos** page.
2. Click the **Tools** option on the **Navigation** menu to open the **Tools** page.
3. In the **Software Updates** area of the **Tools** page, click the **Check for Updates** option.

Note: If needed, ensure that you are logged in to this Drobo device.



4. If a software update is available, a dialog box opens, asking if you would like to install the update. Click the **Yes** button and follow the prompts to install the update.

Manually Updating Firmware from the Website

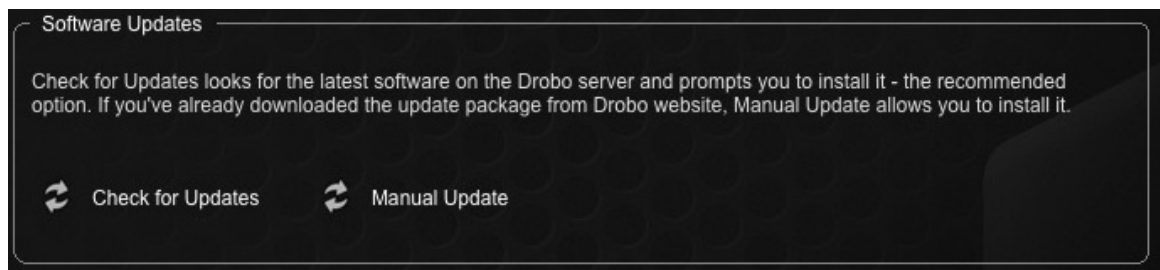
To manually update the firmware from the website, take the following steps.

1. Go to www.drobo.com/support/updates and download the appropriate firmware file (for Windows) or Disk Image file (for the Mac), saving it to a folder that is *not* located on your Drobo device.

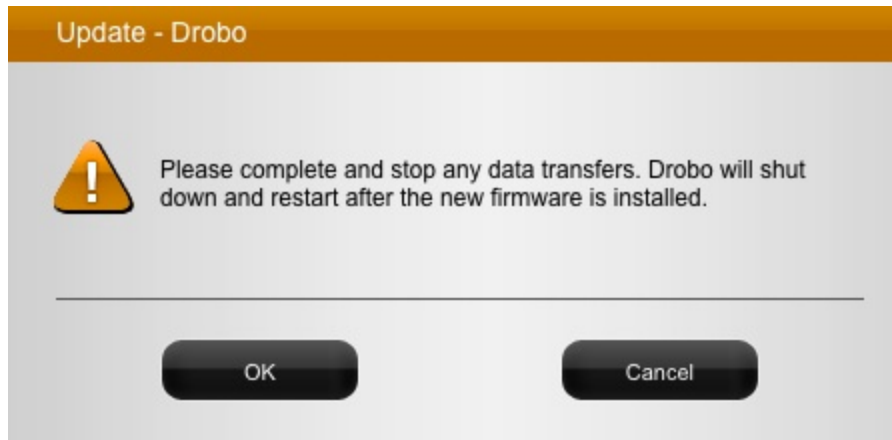
The firmware file ends in the file extension of .zip (e.g., 1.0.2.zip) and applies to both Windows-based computers and the Mac.

Please ensure that you have read and write privileges to this folder.

2. Launch Drobo Dashboard, and select the Drobo 5N from the **All Drobos** page.
3. Click the **Tools** option on the **Navigation** menu for the selected Drobo device to open the **Tools** page.



4. In the **Software Updates** section, click the **Manual Update** option.
A warning message opens, asking you to complete or stop any data transfers.



5. Ensure that the Drobo device is not actively transferring data (blinking yellow and green), and then click the **OK** button.

A dialog box opens, asking you to locate the zip file on your computer.

6. Please do so and then click the **Open** or **OK** button.

Drobo installs the firmware. When finished, a message opens, asking you to reboot your Drobo device to complete the installation.

7. Click the **Yes** button.

Drobo shuts down and restarts after the new firmware is installed.

Safely Shutting Down Your Drobo 5N

If you plan to shut down your Drobo 5N for any reason, it is very important that you always do so *safely*. **Improper Drobo device shutdowns may cause file corruption and/or data loss.**

It is a good idea to shut down your Drobo device before any of the following situations:

- You are not going to be using your Drobo device for an extended period
- You are going to disconnect the cable(s) or power cord
- You want to move your Drobo to another location
- You are going to remove the entire disk pack
- You are going to apply operating system updates

This section covers the following topics:

- ▶ Safely Shutting Down Your Drobo 5N Using Drobo Dashboard
- ▶ Safely Shutting Down Your Drobo 5N Manually

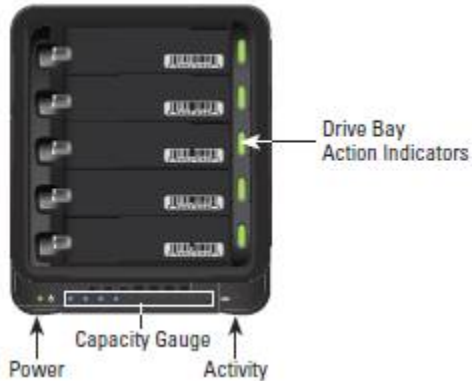
Safely Shutting Down Your Drobo 5N Using Drobo Dashboard

This is the recommended method for safely shutting down your Drobo device.

Note: You need to be logged in to perform this action.

1. Check that the activity light on your Drobo device is off, indicating that no data is actively being transferred to or from your Drobo device. Refer to the image below.

Note: If data is actively being transferred, the activity light will be blinking green.

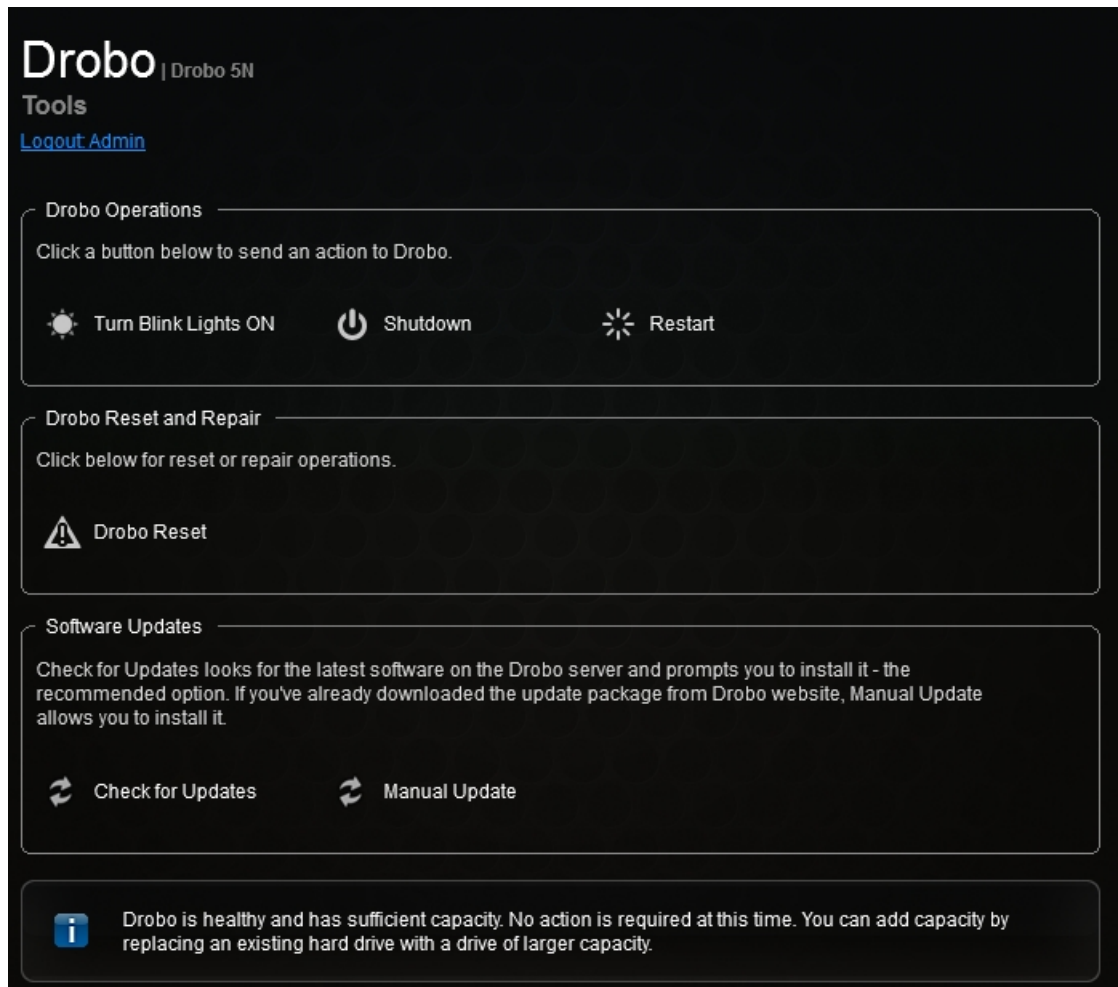


2. Also check to ensure the drive bay action indicator lights are not blinking alternately between yellow and green. This indicates that your Drobo device is busy working to protect your data. Wait until these lights are a solid green.

Note: If one or more drive bay lights are red, you need to add capacity or replace the current drive. However, you can still safely shut down your Drobo device.

3. In Drobo Dashboard, select the Drobo device that you would like to shut down from the **All Drobos** page, and click the **Tools** option on the **Navigation** menu.

The **Tools** page opens.



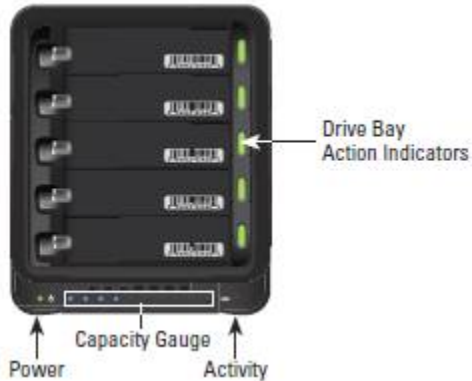
4. In the **Drobo Operations** area, click the **Shutdown** option.
A message box opens, asking you to confirm the shutdown.
5. Click the **Yes** button.
It can take up to two minutes for your Drobo device to power down. Afterwards, the power light turns off, indicating your Drobo device has shut down.

Safely Shutting Down Your Drobo 5N Manually

Although we recommend that you use Drobo Dashboard to shut down the Drobo device, you can also manually shut down the Drobo device safely using the following steps.

1. Check that the activity light on your Drobo device is off, indicating that no data is actively being transferred to or from your Drobo device. Refer to the image below.

Note: If data is actively being transferred, the activity light will be blinking green.



2. Also check to ensure the drive bay action indicator lights are not blinking alternately between yellow and green. This indicates that your Drobo device is busy working to protect your data. Wait until these lights are a solid green.

Note: If one or more drive bay lights are red, you need to add capacity or replace the current drive. However, you can still safely shut down your Drobo device.

3. Unmount or eject the Drobo device volume(s) by doing one of the following:
 - On a Mac, click and drag the Drobo device volume(s) to the trash.
 - In Windows, click on **Safely Remove Hardware** in your system tray (which is located in the lower-right of your screen, and accessible by clicking an up arrow), and then select the appropriate Drobo device.
4. Press the power toggle button on the back of your Drobo device once.

It can take up to two minutes for your Drobo device to power down. But afterwards, the power light turns off, indicating your Drobo device has shut down.

Using the Online User Guide

After you've set up your Drobo device, you're ready to use it to store and back up data. To learn how to manage and use your Drobo device, refer to the Online User Guide for your product, which can be found within Drobo Dashboard by clicking the **Help and Support** option on the **Navigation** menu, and clicking the **View Drobo User Guide** icon. The latest version can also be found at <http://www.drobo.com/support/documentation.php>.

Using Context-Sensitive Help

On the top right corner of Drobo Dashboard, you will find a ? button. Click this button to display context-sensitive help. The **Help** window opens in your Internet browser, providing information particular to the page from which you clicked for help.

Using the Knowledge Base

Our searchable knowledge base provides answers to almost any question related to your Drobo device that you cannot find in the Online User Guide. To access our knowledge base follow the steps below.

1. In the Drobo Dashboard, click the **Help and Support** option on the **Navigation** menu.
The Help and Support page opens.
2. In the **Check Drobo online resources!** area, click the **Search Knowledge Base** link to open the Drobo Knowledge Base web page.

Note: You can access our knowledge base at <http://support.drobo.com/app/answers/list>.

Registering Your Drobo 5N

If you did not register your Drobo device during setup, you can do so from Drobo Dashboard.

Note: You will need to be logged in to perform this action. You will also need to be connected to the Internet.

1. In Drobo Dashboard on the **All Drobos** page, select the Drobo device you need to register and click the **Help and Support** option on the **Navigation** menu.

The **Help and Support** page for that Drobo device opens.

Help and Support

Drobo Registration

Click on the link below to register your Drobo.

[Register my Drobo devices](#)

Check Drobo online resources!

[View Drobo User Guide](#)

[Search Knowledge Base](#)

[Contact Drobo Support](#)

Depending on the problem you want to report, a Diagnostics file may be required by Drobo support.

Please select the Drobo to get Diagnostic from: Drobo S Get Diags

Drobo Dashboard version: 2.3.0 [53999]

2. In the **Drobo Registration** area, click on the **Register my Drobo devices** link.

The **Registration** page opens.

Welcome to the world of Drobo...

Please take a couple of minutes to register your Drobo. This will enable us to help you in case you ever need assistance.

Note: You have to have a Drobo account first to register. If you do not, please use the link below to create one.

[Create a new Drobo Account](#)

Register new Drobo with my Drobo account

Username

Password [Forgot username or password](#)

Skip this step for now (you can register your Drobo at any time from the Help and Support section.)

Next Cancel

3. Do one of the following:
 - If you do not have a Drobo account, click the **Create a new Drobo account** link. A one-page form opens in your web browser. Fill this in and click **Create Account**. Fill this in and create your account, and then return to this step to log into your account.
 - If you already have a Drobo account, select the **Register new Drobo with my Drobo account** option, and then enter your Drobo username and password. You can click the **Forgot username or password** link if needed. Continue with step 4.
4. Click the **Next** button.

Your connected Drobo devices, and their serial numbers display.
5. Select the Drobo device you would like to register, enter its purchase date and select the region from where you purchased it. (See below.)

One more step and you can start using your Drobo! drobo

Select the Drobos listed below you want to register today. Please provide Purchase Date, Region and then click "Register Drobo".

Registered	Name	Serial #	Support Entitlements
	Drobo-FS Drobo FS	TDB101670171	No Entitlements Available
	Drobo2 B800fs	TDB1111C0131	No Entitlements Available

Selected Device: Drobo-FS

Purchase Date:
MM DD YYYY

Region: ▼

Skip this step for now (you can register your Drobo at any time from the Help and Support section.)

Tip: You can click the **Skip this step for now** check box at any time.

- Click the **Register Drobo** button.

The next page shows with a check mark that your product has been registered.

Note: You can choose to purchase a DroboCare license by clicking on that link.

- Repeat steps 5 and 6 to register additional Drobo devices.
- When finished, click the **Done** button.

You are returned to the **Help and Support** page.

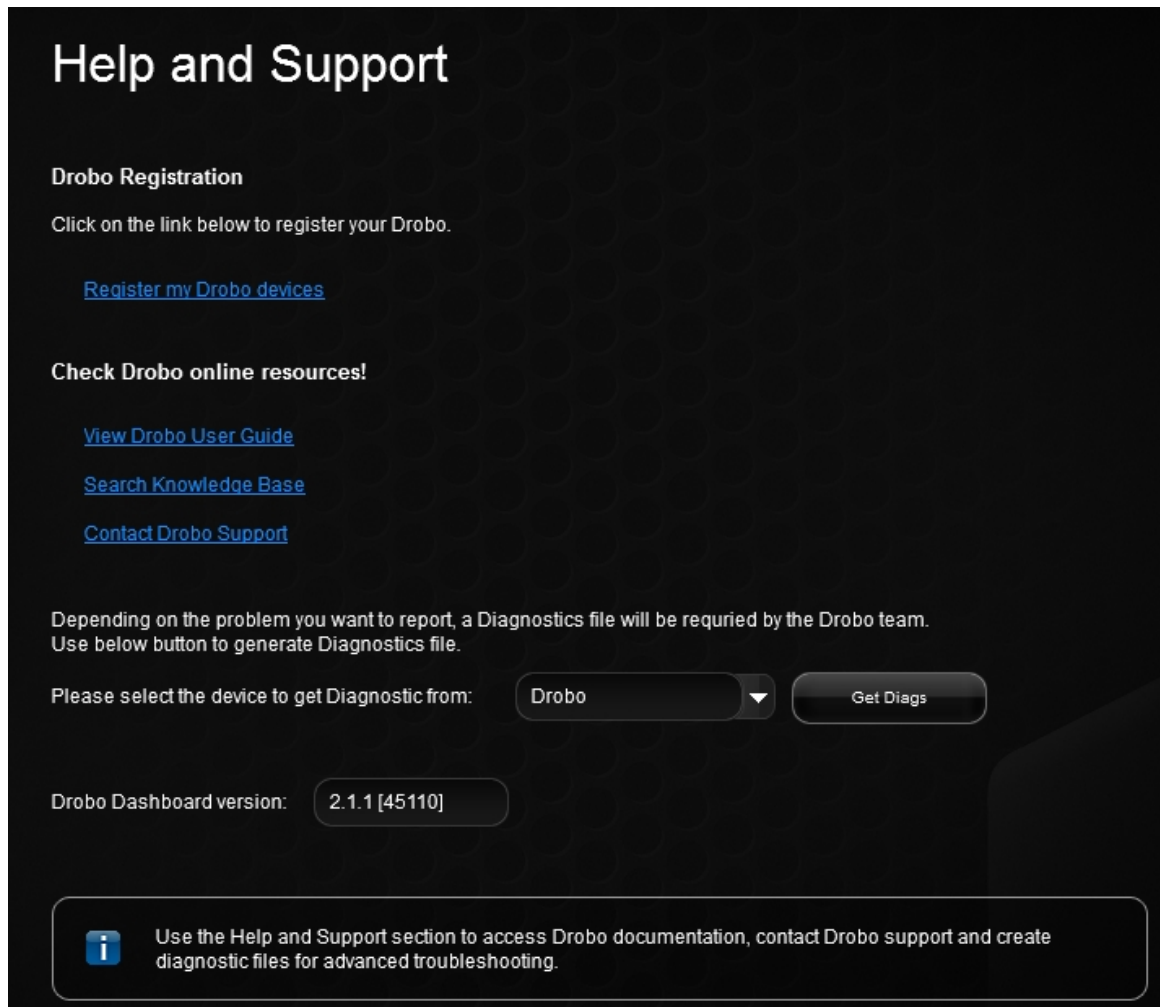
Getting Support

To get support, first be sure to register your product at www.drobo.com/registration, if you haven't already done so. You can then go to www.drobo.com/support for details on how to contact support.

You can also find support in Drobo Dashboard.

- In Drobo Dashboard on the **All Drobos** page, select the Drobo device for which you need to get support, and then click the **Help and Support** option on the **Navigation** menu.

The **Help and Support** page opens and allows you to register your Drobo, access the online user guide and knowledge base, contact the Drobo support team and create a diagnostics file.



The screenshot shows the 'Help and Support' page with a dark background and white text. At the top, the title 'Help and Support' is displayed in a large font. Below it, there is a section for 'Drobo Registration' with a link to 'Register my Drobo devices'. A second section, 'Check Drobo online resources!', contains three links: 'View Drobo User Guide', 'Search Knowledge Base', and 'Contact Drobo Support'. Further down, there is a section for generating a diagnostics file, which includes a dropdown menu for selecting a device (currently set to 'Drobo') and a 'Get Diags' button. Below this, the 'Drobo Dashboard version' is shown as '2.1.1 [45110]'. At the bottom, an information icon is followed by a text box that reads: 'Use the Help and Support section to access Drobo documentation, contact Drobo support and create diagnostic files for advanced troubleshooting.'

You can also obtain additional hardware and phone support by purchasing DroboCare. The DroboCare™ support program extends your peace of mind beyond the standard warranty term and phone support that is included with your Drobo product purchase. To learn more about DroboCare visit: www.drobo.com/droboCare. Also see our DroboCare FAQ at: http://support.datarobotics.com/app/answers/detail/a_id/343.

Copyright, Safety and Limited Warranty Information

Copyright and Warranty

Drobo, Inc. supports lawful use of technology and does not endorse or encourage the use of its products for purposes other than those permitted by copyright law.

Copyright 2012 Drobo, Inc., Drobo, DroboShare, DroboPro, DroboElite/B800i, Drobo B1200i and BeyondRAID are trademarks of Drobo, Inc., which may be registered in some jurisdictions. All other trademarks used are the property of their respective owners.

Information supplied by Drobo, Inc. is believed to be accurate and reliable at the time of publication, but Drobo, Inc. assumes no responsibility for any errors that may appear in this online documentation. Drobo, Inc. reserves the right, without notice, to make changes in product design or specifications. Information is subject to change without notice.

Drobo, Inc., 2460 North First Street, Suite 100, San Jose, CA 95131 USA. For more info, visit: www.drobo.com.

Safety and Warranty

Safety

This product was designed and manufactured to meet strict quality and safety standards. There are, however, some installation and operational precautions of which you should be particularly aware.

Please read these instructions before operating Drobo, DroboPro, DroboElite, DroboFS, ProFS, B800i, B800fs, B1200i, Drobo 5D, Drobo 5N, or Drobo Mini and save them for future reference.

1. Read all instructions: All safety & operating instructions should be read and understood before operation.
2. Retain instructions: The safety and operating instructions should be retained for future reference.
3. Heed Warnings: All warnings on the appliance and in the operating instructions should be followed.
4. Follow Instructions: All operating and usage instructions should be followed.
5. Drobo, DroboPro, DroboElite, Drobo FS, Pro FS, B800i, B800fs, B1200i, Drobo 5D, Drobo 5N, and Drobo Mini are to be used with UL Listed ITE Equipment only.
6. Avoid Water and Moisture: Drobo, DroboPro, DroboElite, Drobo FS, Pro FS, B800i, B800fs, B1200i, Drobo 5D, Drobo 5N, and Drobo Mini should not be used near water (for example, near a bathtub, washbowl, kitchen sink, laundry tub, in a wet basement, or near a swimming pool)
7. Provide Adequate Ventilation: Drobo, DroboPro, DroboElite, Drobo FS, Pro FS, B800i, B800fs, B1200i, Drobo 5D, Drobo 5N, and Drobo Mini should each be situated so that its location or position does not interfere with its proper ventilation. For example, Drobo should not be situated against a surface that may block the ventilation openings or placed in a built-in installation such as a bookcase or cabinet that may impede the flow of air through the ventilation openings.

8. **Protect from Heat:** Drobo, DroboPro, DroboElite, Drobo FS, Pro FS, B800i, B800fs, B1200i, Drobo 5D, Drobo 5N, and Drobo Mini should be situated away from heat sources such as radiators, heat registers, stoves, or other appliances (including amplifiers) that produce heat.
9. **Protect Power Cords:** Power supply cords should be routed so that they are not likely to be walked on or pinched by items placed upon or against them, paying particular attention to cords and plugs, convenience receptacles, and the point at which they exit from the product.
10. **Avoid Object and Liquid Entry:** Never push objects of any kind into Drobo, DroboPro, DroboElite, Drobo FS, Pro FS, B800i, B800fs, B1200i, Drobo 5D, Drobo 5N, and Drobo Mini ventilation slots except drives compliant with the User Guide as they may touch dangerous voltage points or short the parts, resulting in the risk of fire or electric shock. Never spill liquid of any kind onto Drobo.
11. **TO PREVENT ELECTRIC SHOCK, MATCH WIDE BLADE OF ELECTRICAL PLUG TO WIDE SLOT AND INSERT FULLY.**
12. **DROBO, DROBOPRO, DROBOELITE, PRO FS, B800i, B800fs, B1200i, Drobo 5D, Drobo 5N, AND Drobo Mini CONTAIN A LITHIUM BATTERY WHICH CAN EXPLODE IF MISHANDLED. BATTERY IS NOT FIELD OR USER-SERVICEABLE.** Please dispose of battery in a manner consistent with local jurisdictions.
13. **DRIVES IN DROBO, DROBOPRO, DROBOELITE, DROBO FS, PRO FS, B800i, B800fs AND B1200i WILL RETAIN HEAT AFTER USE. PLEASE USE CAUTION WHEN REMOVING DRIVES FROM DROBO, DROBOPRO, DROBOELITE, DroboFS, ProFS, B800i, B800fs, B1200i, Drobo 5D, Drobo 5N, OR Drobo Mini. TO SAFELY REMOVE DRIVES, PRESS THE DRIVE LATCH TO RELEASE THE DRIVE AND ALLOW THE DRIVE TO COOL IN THE DATA BAY FOR 10 MINUTES BEFORE COMPLETELY REMOVING THE DRIVE FROM DROBO, DROBOPRO, DROBOELITE, DroboFS, ProFS, B800i, B800fs OR B1200i. FAILURE TO FOLLOW THIS PROCEDURE MAY RESULT IN INJURY FROM HOT DRIVES.**
14. **Damage Requiring Service:** Drobo, DroboPro, DroboElite, Drobo FS, Pro FS, B800i, B800fs, B1200i, Drobo 5D, Drobo 5N, and Drobo Mini should be serviced by an employee of Drobo, Inc. or a Drobo, Inc. Authorized Reseller ("qualified service personnel"), and should be serviced when:
 - A THE POWER SUPPLY CORD OR PLUG IS DAMAGED OR FRAYED;
 - B LIQUID HAS SPILLED INTO DROBO, DROBOPRO, DROBOELITE, DROBO FS, PRO FS, B800i, B800fs, B1200i, Drobo 5D, Drobo 5N, OR Drobo Mini;
 - C DROBO, DROBOPRO, DROBOELITE, DROBO FS, PRO FS, B800i, B800fs, B1200i, Drobo 5D, Drobo 5N, OR Drobo Mini HAS BEEN EXPOSED TO RAIN OR WATER;
 - D DROBO, DROBOPRO, DROBOELITE, DROBO FS, PRO FS, B800i, B800fs, B1200i, Drobo 5D, Drobo 5N, OR Drobo Mini DOES NOT OPERATE NORMALLY WHEN YOU FOLLOW THE OPERATING INSTRUCTIONS;
 - E DROBO, DROBOPRO, DROBOELITE, DROBO FS, PRO FS, B800i, B800fs, B1200i, Drobo 5D, Drobo 5N, OR Drobo Mini HAS BEEN DROPPED OR THE CHASSIS DAMAGED;
 - F DROBO, DROBOPRO, DROBOELITE, DROBO FS, PRO FS, B800i, B800fs, B1200i, Drobo 5D, Drobo 5N, OR Drobo Mini EXHIBITS A DISTINCT CHANGE IN PERFORMANCE.
15. **Use only the supplied USB 2.0, USB3.0, FireWire 800, Ethernet, and power cables when operating Drobo, DroboPro, DroboElite, Drobo FS, ProFS, B800i, B800fs, B1200i, Drobo 5D, Drobo 5N, or Drobo Mini.**

Servicing – The user should not attempt to service Drobo, DroboPro, DroboElite, Drobo FS, Pro FS, B800i, B800fs, B1200i, Drobo 5D, Drobo 5N, or Drobo Mini beyond that described as user service items in the FAQ section of this manual, the Troubleshooting sections of the Help Files, or the support Knowledge Base. All other servicing should be referred to qualified service personnel.

Cleaning – Unplug Drobo, DroboPro, DroboElite, Drobo FS, Pro FS, B800i, B800fs, B1200i, Drobo 5D, Drobo 5N, or Drobo Mini from the wall outlet before cleaning. Do not use liquid or aerosol cleaners; use a damp cloth. If Drobo, DroboPro, DroboElite, Drobo FS, Pro FS, B800i, B800fs or B1200i comes in contact with any liquid, unplug the power adaptor and let Drobo dry thoroughly before plugging back in.

Power Source – Drobo, DroboPro, DroboElite, Drobo FS, Pro FS, B800i, B800fs, B1200i, Drobo 5D, Drobo 5N, or Drobo Mini should be operated only from the type of power source indicated on the marking label or in this User Guide. If you are not sure of the type of power supplied to your home or business, consult your local power company.

Overloaded Power Outlets – Do not overload wall outlets and extension cords, this can result in risk of fire or electric shock.

Electric Shock – To reduce the risk of electric shock, do not disassemble Drobo, DroboPro, DroboElite, DroboFS, ProFS, B800i, B800fs, B1200i, Drobo 5D, Drobo 5N, or Drobo Mini. Doing so will void the warranty. Take it to a qualified service person when service or repair work is required. Opening or removing covers may expose you to dangerous voltage or other risks. Incorrect reassembly can cause electric shock when Drobo is used.

Moving – Avoid moving Drobo, DroboPro, DroboElite, DroboFS, ProFS, B800i, B800fs, B1200i, Drobo 5D, Drobo 5N, or Drobo Mini while it is plugged in to avoid shock and vibration damage to the installed hard disk drives.

Electrostatic Discharge- The components inside your Drobo and disk drives are sensitive to static electricity, also known as electrostatic discharge. Before you install any disk drive, we recommend that you do the following: 1) Avoid static-causing surfaces such as carpeted floors, plastic, and packing foam; 2) Discharge yourself by touching an unpainted metal surface such as a desk or rack mount; 3) Remove disk drives from their antistatic bags only when you are ready to use them. Be sure to follow any additional recommendations that the disk drive manufacturers provides.

Repair Technician Warning! Before opening the DroboPro, DroboElite, B800i, or B800fs unit or removing the power supply assembly, the AC cord MUST be unplugged from the outside of the unit and the unit must be unpowered. The System Earthing connections of the internal AC cable must not be removed if the system is powered on for service access.

Drobo Specifications & Systems Requirements – Power Supply: AC Input: 100-240VAC~2.5A, 50-60Hz; DC Output: 12-17VDC 6.6A & 80W Max.; Drobo Power Consumption: 4A @ 12V (48W); Operating Temperature: 10°C-35°C (50°-95°F); Non-operating (storage): -10°-60°C (14°-140°F); Operating Humidity: 5%- 80%; Dimensions: 6.0" wide x 6.3" tall x 10.7" long (152.4mm wide x 160mm tall x 271.8mm long); Weight: 6 lb 11.3 oz (without power supply); Storage: Accepts up to four 3.5" SATA I or II internal desktop hard drives; Interfaces: USB 2.0 and FireWire 800 (2nd Generation Only); Drobo Dashboard Application (optional): Microsoft® Windows® Operating Systems, Apple® Macintosh® OS-X v10.4+; File system support: NTFS, HFS+, FAT32, and EXT3 (via DroboShare).

Drobo S Specifications & Systems Requirements – Power Supply: AC Input: 100-240VAC~2.5A, 50-60Hz; DC Output: 12VDC 8.33A & 100W Max; Drobo Power Consumption: 4A @ 12V (48W); Operating Temperature: 10°C-35°C (50°-95°F); Non-operating (storage): -10°-60°C (14°-140°F); Operating Humidity: 5%- 80%; Dimensions: 5.9" wide x 7.3" tall x 10.3" long (150.3mm wide x 185.4mm tall x 262.3mm long); Weight: 8 lbs (without power supply); Storage: Accepts up to five 3.5" SATA I or II internal desktop hard drives; Interfaces: USB 2.0, FireWire 800, eSATA; Drobo Dashboard Application (recommended): Microsoft® Windows® Operating Systems XP SP3+, Apple® Macintosh® OS-X v10.5+; File system support: NTFS, HFS+, FAT32, and EXT3.

DroboPro Specifications & Systems Requirements – Power Supply: AC Input: 100/240VAC, 1.8/0.75 A, 50/60 Hz; Operating Temperature: 10°C-35°C (50°-95°F);

Non-operating (storage): -10°-60°C (14°-140°F); Operating Humidity: 5% - 80%; Dimensions: 12.17" wide x 5.46" tall x 14.1" long (309mm wide x 138.9mm tall x 357.4mm long); Weight: 16 lb 3 oz.; Storage: Accepts up to eight 3.5" SATA I or II internal desktop hard drives; Interfaces: USB 2.0, FireWire 800, and iSCSI; Drobo Dashboard Application (required for iSCSI): Microsoft® Windows® Operating Systems, Apple® Macintosh® OS-X v10.4+ (10.5.6+ required for iSCSI); File system support: NTFS, HFS+, FAT32, and EXT3.

Drobo FS Specifications & Systems Requirements – Power Supply: AC Input: 100-240VAC~2.5A, 50-60Hz; DC Output: 12-17VDC 8.33A & 100W Max.; Drobo Power Consumption: 5A @ 12V (60W); Operating Temperature: 10°C-35°C (50°-95°F); Non-operating (storage): -10°-60°C (14°-140°F); Operating Humidity: 5%- 80%; Dimensions: 5.9" wide x 7.3" tall x 10.3" long (150.3mm wide x 185.4mm tall x 262.3mm long); Weight: 8 lbs. (without power supply); Storage: Accepts up to five 3.5" SATA-compliant internal desktop hard drives; Interface: Ethernet; Drobo Dashboard Application (recommended): Microsoft® Windows® Operating Systems XP SP3+, Apple® Macintosh® OS-X v10.5+; File system support: EXT3.

DroboPro FS Specifications & Systems Requirements – Power Supply: AC Input: 100/240VAC, 1.8/0.75 A, 50/60 Hz; Operating Temperature: 10°C-35°C (50°-95°F); Non-operating (storage): -10°-60°C (14°-140°F); Operating Humidity: 5%-80%; Dimensions: 12.17" wide x 5.46" tall x 14.1" long (309mm wide x 138.9mm tall x 357.4mm long); Weight: 16 lb 3 oz.; Storage: Accepts up to eight 3.5" SATA I or II internal desktop hard drives; Interfaces: Ethernet; Drobo Dashboard Application (recommended): Microsoft® Windows® Operating Systems XP SP3+, Apple® Macintosh® OS-X v10.5+; File system support: EXT3.

DroboElite Specifications & Systems Requirements – Power Supply: AC Input: 100/240VAC, 1.8/0.75 A, 50/60 Hz; Operating Temperature: 10°C-35°C (50°-95°F); Non-operating (storage): -10°-60°C (14°-140°F); Operating Humidity: 5%-80%; Dimensions: 12.17" wide x 5.46" tall x 14.1" long (309mm wide x 138.9mm tall x 357.4mm long); Weight: 16 lb 3 oz.; Storage: Accepts up to eight 3.5" SATA I or II internal desktop hard drives; Interfaces: USB 2.0 (Admin only), and iSCSI; Drobo Dashboard Application (required for iSCSI): Microsoft® Windows® Operating Systems, Apple® Macintosh® OS-X v10.5+; File system support: NTFS, HFS+, FAT32, and EXT3.

B800i Specifications & Systems Requirements – Power Supply: AC Input: 100/240 VAC, 1.8/0.75A, 50/60 Hz; Operating Temperature: 10°C-35°C (50°-95°F); Non-operating (storage): -10°-60°C (14°-140°F); Operating Humidity: 5%- 80%; Dimensions: 12.17" wide x 5.46" tall x 14.1" long (309mm wide x 138.9mm tall x 357.4mm long); Weight: 16 lb 3 oz.; Storage: Accepts up to eight 3.5" SATA I or II internal desktop hard drives; Interfaces: USB 2.0 (Admin only), and

iSCSI; Drobo Dashboard Application (required for iSCSI): Microsoft® Windows® Operating Systems, Apple® Macintosh® OS-X v10.5+; File system support: NTFS, HFS+, FAT32, and EXT3.

B800fs Specifications & Systems Requirements – Power Supply: AC Input: 100/240VAC, 1.8/0.75 A, 50/60 Hz; Operating Temperature: 10°C-35°C (50°-95°F); Non-operating (storage): -10°-60°C (14°-140°F); Operating Humidity: 5% - 80%; Dimensions: 12.17" wide x 5.46" tall x 14.1" long (309mm wide x 138.9mm tall x 357.4mm long); Weight: 16 lbs 3 ozs.; Storage: Accepts up to eight 3.5" SATA I or II internal desktop hard drives; Interfaces: Ethernet; Drobo Dashboard Application (recommended): Microsoft® Windows® Operating Systems XP SP3+, Apple® Macintosh® OS-X v10.5+; File system support: EXT3.

Drobo 5D Specifications & Systems Requirements – Power Supply: AC Input: 100-240VAC~2.5A, 50-60Hz; DC Output: 12VDC 12.5A & 150W Max.; Drobo Power Consumption: 1.5A @ 12V (18W); Operating Temperature: 10°C-35°C (50°-95°F); Non-operating (storage): -10°-60°C (14°-140°F); Operating Humidity: 5% - 80%; Dimensions: 5.9" wide x 7.3" tall x 10.3" long (150.3mm wide x 185.4mm tall x 262.3mm long); Weight: 8 lbs (without power supply); Storage: Accepts up to five 3.5" SATA I or II internal desktop hard drives; Interfaces: USB 3.0, thunderbolt; Drobo Dashboard Application (recommended): Microsoft® Windows® 7 SP1+, Microsoft® Windows® 8, Apple® Macintosh® OS-X 10.7.x, Apple® Macintosh® OS-X 10.8.x ; File system support: NTFS, HFS+, FAT32, and EXT3.

Drobo 5N Specifications & Systems Requirements – Power Supply: AC Input: 100-240VAC~2.5A, 50-60Hz; DC Output: 12VDC 8.33A & 100W Max.; Drobo Power Consumption: 5A @ 12V (60W); Operating Temperature: 10°C-35°C (50°-95°F); Non-operating (storage): -10°-60°C (14°-140°F); Operating Humidity: 5% - 80%; Dimensions: 5.9" wide x 7.3" tall x 10.3" long (150.3mm wide x 185.4mm tall x 262.3mm long); Weight: 8 lbs. (without power supply); Storage: Accepts up to five 3.5" SATA-compliant internal desktop hard drives; Interface: Ethernet; Drobo Dashboard Application (recommended): Microsoft® Windows® 7 SP1+, Microsoft® Windows® 8, Apple® Macintosh® OS-X 10.7.x, Apple® Macintosh® OS-X 10.8.x ; File system support: EXT3.

Drobo Mini Specifications & Systems Requirements – Power Supply: AC Input: 100-240VAC~2.5A, 50-60Hz; DC Output: 12VDC 4.16A & 50W Max.; Drobo Power Consumption: 1.5A @ 12V (18W); Operating Temperature: 10°C-35°C (50°-95°F); Non-operating (storage): -10°-60°C (14°-140°F); Operating Humidity: 5% - 80%; Dimensions: 7.25" wide x 2" tall x 7" long (184mm wide x 50.8mm tall x 178mm long); Weight: 2.2 lbs (without power supply) ; Storage: Accepts up to four 2.5" SATA-compliant internal laptop drives; Interfaces: USB 3.0, Thunderbolt; Drobo Dashboard Application (recommended Microsoft® Windows® 7 SP1+, Microsoft® Windows® 8, Apple® Macintosh® OS-X 10.7.x, Apple® Macintosh® OS-X 10.8.x; File system support: NTFS, HFS+, FAT32, and EXT3.

FCC Compliance & Advisory Statement – This equipment has been tested and found to comply with the limits for a Class B digital device, pursuant to Part 15 of the FCC Rules. These limits are designed to provide reasonable protection against harmful interference in a residential installation. This equipment generates, uses and can radiate radio frequency energy and if not installed and used in accordance with the instructions, may cause harmful interference to radio communications. However, there is no guarantee that interference will not occur in a particular installation. If this equipment does cause harmful interference to radio or television reception, which can be determined by turning the equipment off and on, the user is encouraged to try to correct the interference by one or more of the following measures: 1) Reorient or relocate the receiving antenna. 2) Increase the separation between the equipment and receiver. 3) Connect the equipment into an

outlet on a circuit different from that to which the receiver is connected. 4) Consult the dealer or an experienced radio/TV technician for help. Any changes or modification not expressly approved by the party responsible for compliance could void the user's authority to operate the device. Where shielded interface cables have been provided with the product or specified additional components or accessories elsewhere defined to be used with the installation of the product, they must be used in order to ensure compliance with FCC regulations.

This Class B digital apparatus meets all requirements of the Canadian interference-Causing Equipment Regulations. Cet appareil numérique de la classe B respecte toutes les exigences du Règlement sur le matériel brouilleur du Canada. Please see <http://www.drobo.com> for additional compliancy information

Industry Canada Statement

Complies with the Canadian ICES-003 Class B specifications. Cet appareil numérique de la classe B est conforme à la norme NMB-003 du Canada. This device complies with RSS 210 of Industry Canada.

This Class B device meets all requirements of the Canadian interference-causing equipment regulations.

Cet appareil numérique de la Class B respecte toutes les exigences du Règlement sur le matériel brouilleur du Canada.

VCCI Class B Statement

VCCI クラスB 基準について 情報処理装置等電波障害自主規制について

この装置は、情報処理装置等電波障害自主規制協議会（VCCI）の基準にもとづくクラスB情報技術装置です。

この装置は家庭環境で使用されることを目的としていますが、この装置がラジオやテレビジョン受信機に近接して使用されると、

受信障害を引き起こすことがあります。

説明書に従って正しい取扱いをしてください。

B1200i Specifications & Systems Requirements – Power Supply: AC Input: 100/240 VAC, 8A/5A, 50/60 Hz; Operating Temperature: 10°C-35°C (50°-95°F); Non- operating (storage): -10°-60°C (14°-140°F); Operating Humidity: 20% - 80%; Dimensions: 17.17" wide x 5.20" tall x 21.85 " long (436.1 mm wide x 132.1 mm tall x 555.0 mm long); Weight: 47 lbs (21.3 kgs); Storage: Accepts up to twelve 3.5" SATA II, SATA III, or SAS drives; Interfaces: Three Gigabit iSCSI and one Gigabit Ethernet for management; Drobo Dashboard Application (recommended); Microsoft® Windows® Operating Systems, Apple® Macintosh® OS-X v10.5+; File system support: NTFS, HFS+, and EXT3.

FCC Compliance & Advisory Statement – This equipment has been tested and found to comply with the limits for a Class A digital device, pursuant to Part 15 of the FCC Rules. These limits are designed to provide reasonable protection against harmful interference in a residential installation. This equipment generates, uses and can radiate radio frequency energy and if not installed and used in accordance with the instructions, may cause harmful interference to radio communications. However, there is no guarantee that interference will not occur in a particular installation. If this equipment does cause harmful interference

to radio or television reception, which can be determined by turning the equipment off and on, the user is encouraged to try to correct the interference by one or more of the following measures: 1) Reorient or relocate the receiving antenna. 2) Increase the separation between the equipment and receiver. 3) Connect the equipment into an outlet on a circuit different from that to which the receiver is connected. 4) Consult the dealer or an experienced radio/TV technician for help. Any changes or modification not expressly approved by the party responsible for compliance could void the user's authority to operate the device. Where shielded interface cables have been provided with the product or specified additional components or accessories

elsewhere defined to be used with the installation of the product, they must be used in order to ensure compliance with FCC regulations.

Industry Canada Statement

Complies with the Canadian ICES-003 Class A specifications. Cet appareil numérique de la classe A est conforme à la norme NMB-003 du Canada. This device complies with RSS 210 of Industry Canada.

This Class A device meets all requirements of the Canadian interference-causing equipment regulations.

Cet appareil numérique de la Class A respecte toutes les exigences du Règlement sur le matériel brouilleur du Canada.

VCCI Class A Statement

この装置は、クラスA情報技術装置です。この装置を家庭環境で使用すると電波妨害を引き起こすことがあります。

この場合には使用者が適切な対応を講ずるよう要求されることがあります。

Europe–EU Declaration of Conformity

The equipment complies with the EU directives 89/336/EEC, 73/23/EEC, and 93/68/EEC. This equipment is in conformity with the essential requirements of EU directives: EN 55022:1998 plus A1:2000 & A2:2003, EN 55024:1998 plus A1:2001 & A2:2003, EN 61000-3-2: 2000 plus A2:2005, EN 61000-3-3: 1995 plus A1:2001 & A2:2005, and EN 60950-1:2000+A11:2004.

Hereby, Drobo, Inc., declares that this Disk Storage Array and Network Attached Storage link appliance are in compliance with the essential requirements and other relevant provisions of Directive 1999/5/EC.



Disposal and Recycling Information

When this product reaches its end of life, dispose of the product and batteries used with it according to your local environmental laws and guidelines. For information about Drobo's recycling program, go to www.drobo.com/support/weee/.

European Union



The symbol above means that according to local laws and regulations your product should be disposed of separately from household waste. When this product reaches its end of life, take it to a collection point designated by local authorities. Some collection points accept products for free. The separate collection and recycling of your product at the time of disposal will help conserve natural resources and ensure that it is recycled in a manner that protects human health and the environment.

Battery Disposal

Your Drobo, DroboPro, DroboElite, Drobo FS, DroboPro FS, B800i, B800fs, B1200i, Drobo 5D, Drobo 5N, and Drobo Mini have internal batteries that preserve settings when the unit is off. Do not attempt to change the battery. Only a Drobo, Inc. certified technician can change the battery. When the product has reached the end of its useful life, please dispose of it according to your local environmental laws and guidelines.

本製品の寿命が尽きたときは、お住まいの地域の環境法と廃棄基準に従って本製品と電池を廃棄して下さい。
drobo, inc. のリサイクルプログラムについては、次のwebサイトを参照してください。

LIMITED WARRANTY – NORTH AMERICA AND ASIA PACIFIC

COVERAGE

The warranty obligations of Drobo, Inc. (formerly known as Data Robotics, Inc.) are limited to the terms set forth herein. This Limited Warranty applies only to: (i) product manufactured by or for Drobo; and (ii) replacement components sold by Drobo, of the product manufactured by or for Drobo; that can be identified by the "Data Robotics" or "Drobo" trademark, trade name, or logo affixed to them (collectively, "Product") and is provided only to the original end-user purchaser of the Product ("You" or "Your"). Drobo warrants against defects in materials and workmanship under normal use for a period of: (i) ONE (1) YEAR, for Product sold outside of Europe; and (ii) TWO (2) YEARS for Product sold in Europe; from the date of retail purchase by the original end-user purchaser ("Warranty Period").

Subject to applicable law, Drobo may require that You furnish proof of purchase details and/or comply with registration requirements before receiving any portion of these warranty services.

To register your product or to obtain warranty service, call or submit an online request to Drobo Support. Detailed instructions on how to contact Drobo Support and register your product are located at: <http://www.drobo.com/support/contact-support.php>. Additional details on this and other matters regarding obtaining warranty service are also available at <http://www.drobo.com/support>.

Subject to the terms and conditions herein, if a Product hardware defect arises and a valid claim is received within the applicable Warranty Period Drobo will, at its option, either: (1) repair such defect at no charge, using new or refurbished replacement parts; or (2) replace the defective Product with a Product that is new or which has been manufactured from new or serviceable used parts and is at least functionally equivalent to the original Product; or (3) refund the purchase price of the Product, provided the Product for which the refund is provided is returned to Drobo and such Product shall become Drobo's property.

EXCLUSIONS AND LIMITATIONS

The Limited Warranty does not apply to any non-Product or any software, even if packaged or sold with Product. Manufacturers, suppliers, or publishers, other than Drobo may provide their own warranties to You, but Drobo, to the extent permitted by law, provides such manufacturer's products "as is". SOFTWARE DISTRIBUTED BY DROBO WITH OR WITHOUT THE DROBO BRAND NAME (INCLUDING, BUT NOT LIMITED TO SYSTEM SOFTWARE) IS NOT COVERED UNDER THIS LIMITED WARRANTY. REFER TO THE LICENSING AGREEMENT ACCOMPANYING THE SOFTWARE FOR DETAILS OF YOUR RIGHTS WITH RESPECT TO ITS USE.

DROBO DOES NOT WARRANT THAT THE OPERATION OF THE PRODUCT WILL BE UNINTERRUPTED OR ERROR-FREE. DROBO IS NOT RESPONSIBLE FOR DAMAGE ARISING FROM FAILURE TO FOLLOW INSTRUCTIONS RELATING TO THE PRODUCT'S USE AND/OR STORAGE.

In no event does this Limited Warranty apply: (a) to damage caused by use with non-Products; (b) to damage caused by accident, abuse, misuse, flood, fire, earthquake or other external causes; (b) loss passwords; (c) to damage caused by operating the Product outside the permitted or intended uses described by Drobo; (d) to damage caused by service (including upgrades and expansions) performed by a party other than an authorized representative of Drobo or a Drobo Authorized Reseller; (e) to a Product or Product part that has been modified to significantly alter functionality or capability without the written permission of Drobo; (f) to consumable parts, such as batteries, unless damage has occurred due to a defect in materials or workmanship; or (h) if any Drobo serial number has been removed or defaced.

TO THE EXTENT PERMITTED BY LAW, THIS WARRANTY AND REMEDIES SET FORTH ABOVE ARE EXCLUSIVE AND IN LIEU OF ALL OTHER WARRANTIES, REMEDIES AND CONDITIONS, WHETHER ORAL OR WRITTEN, STATUTORY, EXPRESS OR IMPLIED, AND DROBO SPECIFICALLY DISCLAIMS ANY AND ALL STATUTORY OR IMPLIED WARRANTIES OR CONDITIONS, INCLUDING, WITHOUT LIMITATION, WARRANTIES OR CONDITIONS OF MERCHANTABILITY, FITNESS FOR A PARTICULAR PURPOSE AND WARRANTIES AGAINST HIDDEN OR LATENT DEFECTS. IF DROBO CANNOT LAWFULLY DISCLAIM STATUTORY OR IMPLIED WARRANTIES OR CONDITIONS, THEN TO THE EXTENT PERMITTED BY LAW, ALL SUCH WARRANTIES AND CONDITIONS SHALL BE LIMITED IN DURATION TO THE DURATION OF THIS EXPRESS WARRANTY AND TO REPAIR, REPLACEMENT OR REFUND SERVICE AS DETERMINED BY DROBO IN ITS SOLE DISCRETION. No Drobo reseller, agent, or employee is authorized to make any modification, extension, or addition to this warranty. (Australia only: see note 1 below.)

EXCEPT AS PROVIDED IN THIS WARRANTY AND TO THE EXTENT PERMITTED BY LAW, DROBO IS NOT RESPONSIBLE FOR DIRECT, SPECIAL, INCIDENTAL OR CONSEQUENTIAL DAMAGES RESULTING FROM ANY BREACH OF WARRANTY OR CONDITION, OR UNDER ANY OTHER LEGAL THEORY, INCLUDING BUT NOT LIMITED TO LOSS OF USE; LOSS OF REVENUE; LOSS OF ACTUAL OR ANTICIPATED PROFITS (INCLUDING LOSS OF PROFITS ON CONTRACTS); LOSS OF THE USE OF MONEY; LOSS OF ANTICIPATED SAVINGS; LOSS OF BUSINESS; LOSS OF OPPORTUNITY; LOSS OF GOODWILL; LOSS OF REPUTATION; LOSS OF, DAMAGE TO OR CORRUPTION OF DATA; OR ANY INDIRECT OR CONSEQUENTIAL LOSS OR DAMAGE HOWSOEVER CAUSED INCLUDING THE REPLACEMENT OF EQUIPMENT AND PROPERTY, ANY COSTS OF RECOVERING, PROGRAMMING, OR REPRODUCING ANY PROGRAM OR DATA STORED OR USED WITH DROBO PRODUCTS AND ANY FAILURE TO MAINTAIN THE CONFIDENTIALITY OF DATA STORED ON THE PRODUCT. (Australia only: see note 1 below.)

THE FOREGOING LIMITATION SHALL NOT APPLY TO DEATH OR PERSONAL INJURY CLAIMS. DROBO DISCLAIMS ANY REPRESENTATION THAT IT WILL BE ABLE TO REPAIR ANY PRODUCT UNDER THIS WARRANTY OR MAKE A PRODUCT EXCHANGE WITHOUT RISK TO OR LOSS OF THE PROGRAMS OR DATA.

CONSUMER PROTECTION LAWS

IF YOU ARE COVERED BY CONSUMER PROTECTION LAWS OR REGULATIONS IN YOUR COUNTRY OR REGION OF PURCHASE, THE BENEFITS CONFERRED BY THIS WARRANTY ARE IN ADDITION TO ALL RIGHTS AND REMEDIES CONVEYED BY SUCH CONSUMER PROTECTION LAWS AND REGULATIONS. Some countries, states and provinces do not allow the exclusion or limitation of incidental or consequential damages or exclusions or limitations on the duration of implied warranties or conditions, so the above limitations or exclusions may not apply to You. This warranty gives You specific legal rights, and You may also have other rights that vary by country, state or province. This Limited Warranty is governed by and construed under the laws of the country in which the product purchase took place. Drobo, the warrantor under this Limited Warranty, is identified at the end of this document according to the country or region in which the product purchase took place. (Australia only: see note 1 below.)

OBTAINING WARRANTY SERVICE

Product Replacement and Repair: No Product may be returned directly to Drobo without first contacting Drobo for a Return Material Authorization ("RMA") number (Australia only: see notes 2 and 3 below). If it is determined that the Product may be defective, You will be given an RMA number and instructions for Product return. An unauthorized return, i.e. one for which an RMA number has not been issued, and/or one that does not conform to the instructions given for Product return, will be returned to You at Your expense. You are responsible for the costs incurred related to returning the Product to Drobo pursuant to the Product return instructions.

Drobo is responsible for the costs incurred related to shipping the Product back to You. In the event the Product is to be repaired or replaced, upon receipt of the Product for which You were issued an RMA in accordance with the Product return instructions, Drobo shall ship to you a

replacement Product by standard ground shipping. In the event the Product is to be repaired or replaced, if You choose to provide Your credit card information to Drobo at the time You are issued an RMA, Drobo will Advance Ship to You a replacement Product, and You agree to promptly return Your Product at issue within seven (7) days of issuance of the RMA number. In the event Drobo does not receive the Product for which You were issued an RMA within such seven (7) days, Your credit card will be charged the manufacturer's suggested retail price of the replacement Product. "Advance Ship" means if Your credit card information is received: (i) before 1 pm local time, ship the same day; or (ii) after 1 pm local time, ship the next business day.

Technical Support: During the Warranty Period, You, as part of this Limited Warranty coverage, are entitled to access Drobo's online help resources to address any question about the Product ("Online Help Resources"). For a period of ninety days from purchase by You ("Technical Support Access Period"), as part of this Limited Warranty coverage, if the Online Help Resources don't address the support issue, You are entitled to initiate a support request online at www.drobo.com/support. After the Technical Support Access Period, support requests may be made at an additional fee. In response to support requests, during local business hours (of the location from which the Product was originally purchased), a Drobo representative or Drobo Authorized Reseller will help determine whether Your Product requires service and, if it does, will inform you how Drobo will provide it. Drobo or its Drobo Authorized Resellers will provide warranty service on Products that are tendered or presented for service during the Warranty Period, as permitted by law. Warranty service will be provided from the country from which the Product was originally purchased to the extent reasonably possible. Service options, parts availability and response times will vary according to country.

Data Protection: You should make periodic backup copies of the data and programs contained on the Product's hard drive to protect Your data and as a precaution against possible operational failures. Before You deliver your Product for warranty service it is Your responsibility to keep a separate backup copy of the system software, application software and data, and disable any security passwords. You will be responsible for reinstalling all such software, data and passwords. DROBO AND ITS AUTHORIZED RESELLERS ARE NOT LIABLE FOR ANY DAMAGE TO OR LOSS OF ANY PROGRAMS, DATA, OR OTHER INFORMATION STORED ON ANY MEDIA, OR ANY NON-DROBO PRODUCT OR PART NOT COVERED BY THIS WARRANTY. RECOVERY AND REINSTALLATION OF SYSTEM, APPLICATION SOFTWARE, AND USER DATA ARE NOT COVERED UNDER THIS LIMITED WARRANTY.

DROBOCARE

You may be eligible to purchase DroboCare, a support product which enhances the standard warranty, and is available for an additional fee. Please see the DroboCare terms and conditions at <http://www.drobo.com/droboicare>.

GENERAL INFORMATION

The information contained herein is subject to change without notice. The only warranties for Drobo products and services are set forth in the warranty statements accompanying the products and services. Nothing herein should be construed as constituting an additional warranty. Drobo shall not be liable for technical or editorial errors or omissions contained herein.

Drobo, Inc.
2460 North First St.
San Jose, CA 95131 USA

Notes (Australia only)

The following applies if you purchased our goods in Australia and you are a consumer under the ACL:

1. Our goods come with guarantees that cannot be excluded under the Australian Consumer Law. You are also entitled to have the goods repaired or replaced if the goods fail to be of acceptable quality and the failure does not amount to a major failure.

2. If you have an enquiry or you wish to claim under this Limited Warranty, please contact: Drobo Technical Support online at: <http://www.drobo.com/support/contact-support.php>) or via:

Drobo Warranty Returns

c/o Drobo Technical Support
2460 North First St.
San Jose, CA 95131 USA

USA: +1 (866) 426 4280
Asia Pacific: + 65 6270 2653

Europe: Regional Telephone Numbers

(Please do NOT return equipment without first obtaining an authorization number else we may refuse your shipment.)

3. Goods presented for repair may be replaced by refurbished goods of the same type rather than being repaired. Refurbished parts may be used to repair the goods.

PLEASE PRINT AND RETAIN A COPY OF THIS AGREEMENT FOR YOUR RECORDS.

LIMITED WARRANTY - EMEA

WHAT THIS DOCUMENT IS ABOUT

This document gives you additional legal protection for faulty Drobo products. It is in addition to and not in substitution for your statutory rights as a consumer against Drobo, where you bought the product direct from our online store or the retailer who you bought the product from relating to faulty or misdescribed goods or services.

Drobo's obligations over and above your normal legal rights to repair or replace faulty product are set out in this document. So please read this document carefully and keep a copy safe.

This Limited Warranty applies only to Drobo products – that means products manufactured by or for Drobo, and replacement components sold by Drobo and manufactured by or for Drobo.

These can be identified because they all have the "Data Robotics" or "Drobo" name, or logo on them. In this Limited Warranty document, we call these products "Products". This Limited Warranty does not apply, for instance, to the hard drives manufactured by other companies which may be in the same package as our Product. This Limited Warranty is provided only to the original end-user purchaser of the Product, who we call "You".

IMPORTANT: You need to produce the original receipt for the Product or other proof of the original retail purchase from Drobo or one of its authorised resellers satisfactory to us in order to benefit from this Limited Warranty.

We warrant Products against defects in materials and workmanship under normal use as set out in this table:

Name of Product	Where You bought the product (for online orders, this is the delivery address)	Length of limited warranty protection (1)
All Products	In the European Union	Two years
Drobo 5D and Drobo Mini	Outside the European Union	Two years
All Products EXCEPT the Drobo 5D and Drobo Mini	Outside the European Union	One year

(1) from date of retail purchase by the original purchaser

We call the period set out in the right-hand column above the "Warranty Period". If a Product hardware defect arises and a valid claim is received within the applicable Warranty Period, at our option, we will either: (1) repair such defect at no charge, using new or refurbished replacement parts; or (2) exchange the defective Product with a Product that is new or which has been

manufactured from new or serviceable used parts and is at least functionally equivalent to the original Product; or (3) refund the purchase price of the Product. If we decide to refund You the purchase price, You must first provide us with proof of purchase and return the defective Product to us. Contact support to obtain a Return Material Authorization ("RMA") number. Telephone numbers and details how to submit a request online are at <http://www.drobo.com/support/contact-support.php>. You must pack the Product in appropriate protective packaging and return the unit at your own cost. The returned Product will become our property.

IMPORTANT EXCLUSIONS AND LIMITATIONS

We don't manufacture the data drives on which your data and content is stored, and so we are not responsible under this Limited Warranty for any issues, including defects and performance problems, in those drives. When you return Products to us under this Limited Warranty, you must take the drives out of the Product first because problems with a drive should be dealt with under the warranty provided by its manufacturer, including where even if the drive is bought together with a Product. Please note the instruction manuals' warnings including the advice not to turn your Product off whilst data is being copied across drives (in 'relayout') as you risk losing data. **For these reasons, we do not accept any responsibility under this Limited Warranty for any data, including any lost or corrupted data, no matter how and why this may occur.**

Back-ups: You should make periodic backup copies of the data and programs contained on the Product's hard drive to protect Your data and as a precaution against possible operational failures. Before You deliver your Product for warranty service it is Your responsibility to keep a separate backup copy of the system software, application software and data, and disable any security passwords. You will be responsible for reinstalling all such software, data and passwords.

The Limited Warranty does not apply to any hardware or equipment that is not a Product (see "What this document is about" above) or any software, even if packaged or sold with Product. Manufacturers, suppliers, or publishers, other than Drobo may provide their own warranties to You. **DROBO IS NOT RESPONSIBLE FOR DAMAGE ARISING FROM FAILURE TO FOLLOW INSTRUCTIONS RELATING TO THE PRODUCT'S USE AND/OR STORAGE.**

In no event does this limited warranty apply: (a) to damage caused by use with equipment or hardware that is not a Product (see "What this document is about" above); (b) to damage caused by accident, abuse, misuse, flood, fire, earthquake or other external causes; (c) loss passwords; (d) to damage caused by operating the Product outside the permitted or intended uses described by Drobo; (e) to damage caused by service (including upgrades and expansions) performed by a party other than an authorized representative of Drobo or a Drobo Authorized Reseller; (f) to a Product or Product part that has been modified to significantly alter functionality or capability without the written permission of Drobo; (g) to consumable parts, such as batteries, unless damage has occurred due to a defect in materials or workmanship in the Product; or (h) if any Drobo serial number has been removed or defaced.

No Drobo reseller, agent, or employee is authorized to make any modification, extension, or addition to this warranty on behalf of Drobo.

Consumer users

Where you have bought the Product primarily for domestic and non-commercial use, the following limitation on Drobo's liability under this Limited Warranty apply:

DROBO IS NOT RESPONSIBLE TO YOU FOR ANY BUSINESS LOSS OR DAMAGE (SUCH AS LOSS OF PROFIT) OR FOR ANY LOSS THAT IS NOT A REASONABLY FORSEEABLE CONSEQUENCE OF YOUR USE OF THE PRODUCT.

THE FOREGOING LIMITATION SHALL NOT APPLY TO DEATH OR PERSONAL INJURY CLAIMS, TO FRAUD, AND PRODUCT LIABILITY CLAIMS WHERE PRODUCTS ARE UNSAFE.

Business users

Where you have bought the Product primarily for business use, the following limitation on Drobo's liability under this Limited Warranty apply:

TO THE EXTENT PERMITTED BY LAW, THIS WARRANTY AND REMEDIES SET FORTH ABOVE ARE EXCLUSIVE AND IN LIEU OF ALL OTHER WARRANTIES, REMEDIES AND CONDITIONS, WHETHER ORAL OR WRITTEN, STATUTORY, EXPRESS OR IMPLIED, AND DROBO SPECIFICALLY DISCLAIMS ANY AND ALL STATUTORY OR IMPLIED WARRANTIES OR CONDITIONS, INCLUDING, WITHOUT LIMITATION, WARRANTIES OR CONDITIONS OF MERCHANTABILITY, FITNESS FOR A PARTICULAR PURPOSE AND WARRANTIES AGAINST HIDDEN OR LATENT DEFECTS. IF DROBO CANNOT LAWFULLY DISCLAIM STATUTORY OR IMPLIED WARRANTIES OR CONDITIONS, THEN TO THE EXTENT PERMITTED BY LAW, ALL SUCH WARRANTIES AND CONDITIONS SHALL BE LIMITED IN DURATION TO THE DURATION OF THIS EXPRESS WARRANTY AND TO REPAIR OR REPLACEMENT SERVICE AS DETERMINED BY DROBO IN ITS SOLE DISCRETION.

EXCEPT AS PROVIDED IN THIS WARRANTY AND TO THE EXTENT PERMITTED BY LAW, DROBO IS NOT RESPONSIBLE FOR DIRECT, SPECIAL, INCIDENTAL OR CONSEQUENTIAL DAMAGES RESULTING FROM ANY BREACH OF WARRANTY OR CONDITION, OR UNDER ANY OTHER LEGAL THEORY, INCLUDING BUT NOT LIMITED TO LOSS OF USE; LOSS OF REVENUE; LOSS OF ACTUAL OR ANTICIPATED PROFITS (INCLUDING LOSS OF PROFITS ON CONTRACTS); LOSS OF THE USE OF MONEY; LOSS OF ANTICIPATED SAVINGS; LOSS OF BUSINESS; LOSS OF OPPORTUNITY; LOSS OF GOODWILL; LOSS OF REPUTATION; LOSS OF, DAMAGE TO OR CORRUPTION OF DATA; OR ANY INDIRECT OR CONSEQUENTIAL LOSS OR DAMAGE HOWSOEVER CAUSED INCLUDING THE REPLACEMENT OF EQUIPMENT AND PROPERTY, ANY COSTS OF RECOVERING, PROGRAMMING, OR REPRODUCING ANY PROGRAM OR DATA STORED OR USED WITH DROBO PRODUCTS AND ANY FAILURE TO MAINTAIN THE CONFIDENTIALITY OF DATA STORED ON THE PRODUCT.

DROBO DISCLAIMS ANY REPRESENTATION THAT IT WILL BE ABLE TO REPAIR ANY PRODUCT UNDER THIS WARRANTY OR MAKE A PRODUCT EXCHANGE WITHOUT RISK TO OR LOSS OF THE PROGRAMS OR DATA.

DROBO AND ITS AUTHORIZED RESELLERS ARE NOT LIABLE FOR ANY DAMAGE TO OR LOSS OF ANY PROGRAMS, DATA, OR OTHER INFORMATION STORED ON ANY MEDIA, OR ANY NON-DROBO PRODUCT OR PART NOT COVERED BY THIS WARRANTY. RECOVERY AND REINSTALLATION OF SYSTEM, APPLICATION SOFTWARE, AND USER DATA ARE NOT COVERED UNDER THIS LIMITED WARRANTY.

CONSUMER PROTECTION LAWS

IF YOU ARE COVERED BY CONSUMER PROTECTION LAWS OR REGULATIONS IN YOUR COUNTRY OR REGION OF PURCHASE, THE BENEFITS CONFERRED BY THIS WARRANTY ARE IN ADDITION TO ALL RIGHTS AND REMEDIES CONVEYED BY SUCH CONSUMER PROTECTION LAWS AND REGULATIONS. This warranty gives You specific legal rights, and You may also have other rights that vary by country, state or province. Drobo, the warrantor under this Limited Warranty, is identified at the end of this document according to the country or region in which the product purchase took place.

OBTAINING WARRANTY SERVICE

Product Replacement: No Product may be returned directly to Drobo without first contacting Drobo for a RMA number. You can contact us to request an RMA number by contacting technical support. Telephone numbers and details how to submit a request online are at <http://www.drobo.com/support/contact-support.php>.

If it is determined that the Product may be defective, You will be given an RMA number and instructions to return the Product. An unauthorized return, i.e. one for which an RMA number has not been issued, and/or one that does not conform to the instructions given for Product return, will be returned to You at Your expense. You are responsible for the costs incurred related to

returning the Product to Drobo pursuant to the Product return instructions. Drobo is responsible for the costs incurred related to shipping the Product back to You. In the event the Product is to be repaired or replaced, upon receipt of the Product for which You were issued an RMA in accordance with the Product return instructions, Drobo shall ship to you a replacement Product by standard ground shipping. In the event the Product is to be repaired or replaced, if You choose to provide Your credit card information to Drobo at the time You are issued an RMA, Drobo will Advance Ship to You a replacement Product, and You agree to promptly return Your Product at issue within seven (7) days of issuance of the RMA number. In the event Drobo does not receive the Product for which You were issued an RMA within such seven (7) days, Your credit card will be charged the manufacturer's suggested retail price of the replacement Product. "Advance Ship" means, if Your credit card information is received: (i) before 1 pm local time, ship the same day; or (ii) after 1 pm local time, ship the next business day; for express delivery.

Technical Support: During the Warranty Period, You, as part of this limited warranty coverage, are entitled to access Drobo's online help resources to address any question about the Product ("Online Help Resources"). For a period of ninety days from retail purchase by You (we call this ninety days the "Technical Support Access Period"), as part of this limited warranty coverage, if the Online Help Resources don't address the support issue, You are entitled to initiate a support request online at www.drobo.com/support. After the Technical Support Access Period, support requests may be made at an additional fee available on request. In response to support requests, during local business hours, a Drobo representative or Drobo Authorized Reseller will help determine whether Your Product requires service and, if it does, will inform you how Drobo will provide it. Drobo or its Drobo Authorized Resellers will provide warranty service on Products that are tendered or presented for service during the Warranty Period. Warranty service will be provided from the country from which the Product was originally purchased to the extent reasonably possible. Service options, parts availability and response times will vary according to country. In accordance with applicable law, Drobo may require that You furnish proof of purchase details and/or comply with registration requirements before receiving warranty service. Please refer to the online product documentation at www.drobo.com/support for more details on this and other matters on obtaining warranty service.

DROBOCARE

You may be eligible to purchase DroboCare, a support product which enhances the standard warranty, and is available for an additional fee. Please see the DroboCare terms and conditions at www.drobo.com/drobocare.

GENERAL INFORMATION This limited warranty shall be, in all respects, governed by and construed under the laws of California, without regard to its conflict of laws provisions, and the parties submit to the exclusive jurisdiction of the courts of Santa Clara County, California. The information contained herein is subject to change without notice in respect of subsequent Products you may purchase. The only warranties for Drobo products and services are set forth in the warranty statements accompanying the products and services. Nothing herein should be construed as constituting an additional warranty. Drobo shall not be liable for technical or editorial errors or omissions contained herein.

Drobo, Inc.
2460 North First St.
San Jose, CA 95131USA

PLEASE PRINT AND RETAIN A COPY OF THIS AGREEMENT FOR YOUR RECORDS.